

EJBCR

Expanded Junction Box for CR Series Troffers

Product Description

The CR Series Expanded Junction Box doubles the size of the standard J-Box and allows for easier wiring when doing through wire or using heavier gauges of wire.

Product Specifications

Galvanized steel 18 gauge

Dimensions: L 2.81" (71mm) x W 1.60" (40mm) x H 2.36" (60mm)

Regulatory & Voluntary Qualifications

UL Listed

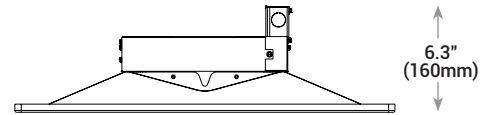
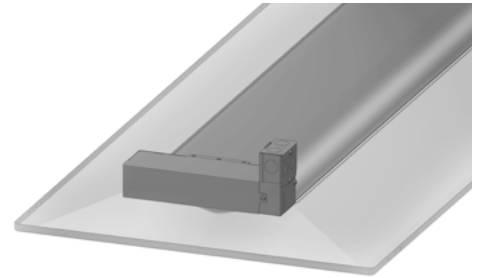
Suitable for damp locations

Designed for indoor use

Installation

- Remove existing J-Box lid
- Install EJBCR over opening of existing J-Box
- Secure in place with enclosed screw
- Install existing J-Box lid on EJBCR

NOTE: Reference <http://lighting.cree.com> for detailed installation instructions




NOTE: Use of Expanded Junction Box accessory will increase the depth of the troffer to 6.3" (160mm)

Ordering Information

Example: EJBCR 5PK

EJBCR-5PK
Product
EJBCR-5PK - Sold in packs of 5 - Not for use with Cree SmartCast™ Technology

 **CA RESIDENTS WARNING:** Cancer and Reproductive Harm – www.p65warnings.ca.gov

© 2018 Cree, Inc and/or one of its subsidiaries. All rights reserved. For informational purposes only. Content is subject to change. Patents cree.com/patents. Cree® and the Cree logo are registered trademarks and SmartCast™ is a trademark of Cree, Inc.

US: lighting.cree.com

T (800) 236-6800 F (262) 504-5415

Rev. Date: V2 10/11/2018

Canada: www.cree.com/canada

CREE 

T (800) 473-1234 F (800) 890-7507