

**4' / 8' Fluorescent Strip Retrofit
LED-Ready Kit
Lamps NOT Included**

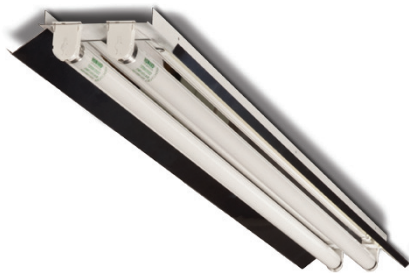
Project:	
Catalog#:	
Approved by:	



Proudly
Designed & Assembled
IN THE USA*

Description

FSR LED-Ready series fluorescent strip channel LED retrofit kits are a simple and cost-effective solution to upgrading existing 4' and 8' strip fixtures into efficient LED-Ready strips. This fixture uses 2 or 4, line voltage 4' LED lamps (Type B).



Applications

Commercial facilities Warehouse applications
Manufacturing facilities Retail stores

Features

- No ballast installed
- Includes shunted and non-shunted T8 lamp holder so they are compatible with single-ended and double-ended 4' LED tubes (Type B)
- Construction
 - Designed for trouble free installation.
 - Uses two (2) 4' gear trays that install independently for easy installation (FSR8).
 - Lampholder cutouts guarantee correct lampholder spacing and that lampholder will not fall out during install.
 - Code-gauge cold rolled steel.
 - High gloss, baked enamel finish
 - High quality lamp holders
- FSR4 contents: 1 geartray with lampholders; 6 tek screws; 2 geartray tethers
- FSR8 contents: 2 geartrays with lampholders; 8 tek screws; 4 geartray tethers

Compatible with **F32T8/8xx/LED/16W/AC** & **F32T8/8xxLED/12.5W/AC** Linear LED Lamps



click image for spec sheets

LAMPS NOT INCLUDED

Field Installed Options Ordering

Model	Description
FSR4-E	Enhanced Specular Aluminum Reflector (95% reflectance)
FSR4-A	Specular Aluminum Reflector (86% reflectance)
FSR4-W	White Aluminum Reflector (91% reflectance)
FSR8-E	Enhanced Specular Aluminum Reflector (95% reflectance)
FSR8-A	Specular Aluminum Reflector (86% reflectance)
FSR8-W	White Aluminum Reflector (91% reflectance)

Ordering Information

Model	No. of Lamp Positions**	(L) Length	(W) Width
FSR44-2LT8	2	48"	4.25"
FSR84-2LT8	2	48" (x2)	
FSR84-4LT8	4		

Sample Ordering Information

FSR84-4LT8
8-Foot LED Strip Retrofit
4.25" pan width
4 T8 LED Lamps Positions

*Foreign and domestic components.

**Lamps Not Included