



PROJECT: \_\_\_\_\_ TYPE: \_\_\_\_\_

LOCATION: \_\_\_\_\_ CAT: \_\_\_\_\_



### Description

Use Commercial Grade Light String for decorative, event oriented, or festive lighting applications.

### Features

- 14AWG SJTW 2-wire light string available in 48ft or 100ft 'Cord and Plug' sets as well as 330ft bulk reels
- Formulated PVC sockets form a tight seal around bulbs to preclude the entrance of water and moisture
- Suspended socket has T-mold with mounting hole at top while non-suspended socket has two mounting ears built into the base
- Use with E26 base Long Life Incandescent Lamps or Pro Decorative Lamps (sold separately)

### Mounting

For spans up to 20 feet, use eye bolts and plastic ties to anchor ends. For spans longer than 20 feet, use catenary cable (sold separately) with plastic ties at each socket.

### Applications

Patios, overhangs, outdoor living areas, tents for weddings or festivals, event lighting



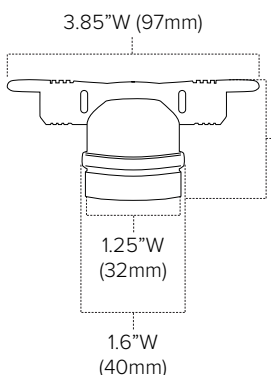
## Technical Information

| Series               | LS-M-24-48-GR  | LS-M-24-100-BK                                      | LS-M-24-BK                                    | LS-M-24-GR | LS-MS-24-48-BK                                      | LS-MS-24-48-GR | LS-MS-24-100-BK                                     | LS-MS-24-100-WH | LS-MS-24-BK                                   | LS-MS-24-WH | LS-MS-24-GR |  |
|----------------------|--|---|---|------------|---|----------------|---|-----------------|---|-------------|-------------|--|
| Length               | 48ft   | 100ft   | 330ft   | 330ft      | 48ft  | 48ft           | 100ft   | 100ft           | 330ft   | 330ft       | 330ft       |  |
| Socket Type          | Non-suspended E26 Base   |   |   |            | Suspended E26 Base                                  |                |   |                 |   |             |             |  |
| Socket Spacing       | 24"  |   |   |            |   |                |   |                 |   |             |             |  |
| Total Sockets        | 24   | 50  | 165   | 165        | 24  | 24             | 50  | 50              | 165   | 165         | 165         |  |
| Wire Color           | Green  | Black   | Black   | Green      | Black   | Green          | Black   | White           | Black   | White       | Green       |  |
| Wire Type            | 14AWG SJTW 2-wire with 120V plug and terminated end                                      | 14AWG SJTW 2-wire with 120V plug and terminated end | 14AWG SJTW 2-wire; No plug, No terminated end |            | 14AWG SJTW 2-wire with 120V plug and terminated end |                | 14AWG SJTW 2-wire with 120V plug and terminated end |                 | 14AWG SJTW 2-wire; No plug, No terminated end |             |             |  |
| Voltage              | 120V AC, 60Hz  |   |   |            |   |                |   |                 |   |             |             |  |
| Max Watts Per Socket | 25 watts max per socket  |   |   |            |   |                |   |                 |   |             |             |  |
| Max Watts Per String | 600 watts  | 1250 watts  | 1800 watts                                    | 1800 watts | 600 watts   | 600 watts      | 1250 watts  | 1250 watts      | 1800 watts                                    | 1800 watts  | 1800 watts  |  |
| Cuttability          | All cut ends must be sealed with LS-M//MS-END and/or electrical tape (sold separately)** |   |   |            |   |                |   |                 |   |             |             |  |
| Rating               | Indoor/Outdoor; Suitable for year-round use*; IP64**                                     |   |   |            |   |                |   |                 |   |             |             |  |
| Rated Life           | Varies by lamp used  |   |   |            |   |                |   |                 |   |             |             |  |

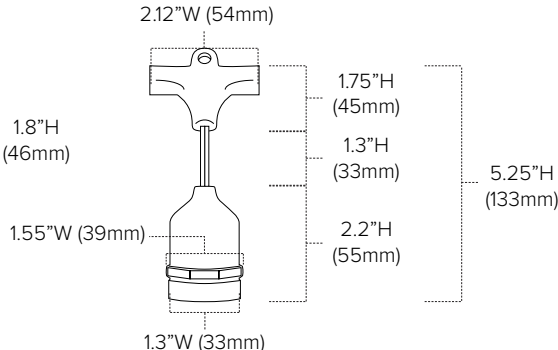
\* All LS products are non-rated; Not intended for installation in ceilings, soffits, cabinets or other enclosed spaces.

\*\*For non-rated LS product, any cut ends must be sealed with LS-M//MS-END and/or electrical tape (ensure proper seal to preclude entrance of water). Keep lamp at least 4.9m/16ft from pools and spas.

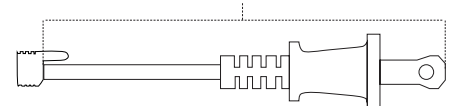
### LS-M Socket Dimensions



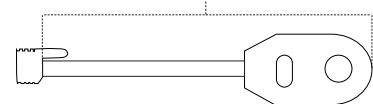
### LS-MS Socket Dimensions



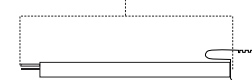
LS 'Cord and Plug' set Lead Wire: 16\"/>



LS 'Cord and Plug' set Tail Wire: 9\"/>



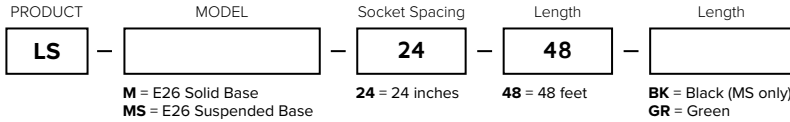
LS '330ft Reel' Lead Wire: 72\"/>





## Ordering Information

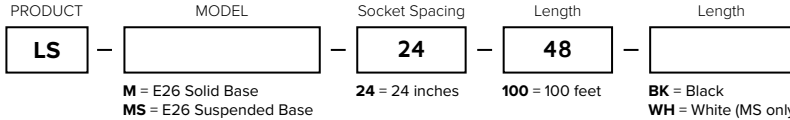
### 120V LS E26 Series 48ft 'Cord and Plug' sets



### 120V LS E26 Series 48ft 'Cord and Plug' Sets Include:

(1) 48ft length of LS series commercial grade light string with 120V plug and terminated end

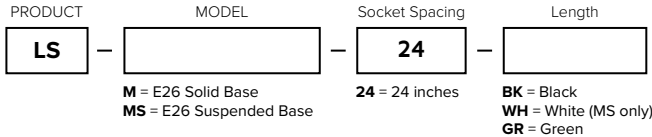
### 120V LS E26 Series 100ft 'Cord and Plug' sets



### 120V LS E26 Series 100ft 'Cord and Plug' Sets Include:

(1) 100ft length of LS series commercial grade light string with 120V plug and terminated end

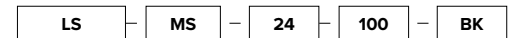
### 120V LS E26 Series 330ft Bulk Reels



### 120V LS E26 Series 330ft Bulk Reels Include:

(1) 330ft length of LS series commercial grade light string without plug and without terminated end

Example Part # **LS-MS-24-100-BK**



## Accessories

| Image | Item             | Description  |
|-------|------------------|--|
|       | LS-M/MS-END      | Black plastic end cap for 14AWG SJTW Commercial Grade Light String   |
|       | Compatible Lamps | Pro Decorative Series: PS14-E26, PA15-E26, PG50-E26, PG45-E26, PG40-E26, and PC7<br>Standard LED Series: S14-LED<br>Long Life Incandescent B-Series: B7.5S11 and B11S14        |
|       | LS-CABLE-60      | 60ft Catenary Cable Kit Includes: (1) 60ft length of 1/8" diameter catenary/guide cable for light string installation, (2) Heavy duty cable locks, and (1) Cable release key   |
|       | LS-CABLE-110     | 110ft Catenary Cable Kit Includes: (1) 110ft length of 1/8" diameter catenary/guide cable for light string installation, (2) Heavy duty cable locks, and (1) Cable release key |
|       | LS-CABLE-500     | 500ft Catenary Cable Bulk Reel Includes: (1) 500ft length of 1/8" diameter catenary/guide cable for light string installation  |
|       | LS-LOCK-4        | (4) Heavy duty cable locks for 1/8" catenary cable; Support loads up to 330lbs; Includes cable release key   |
|       | LS-TT            | Tensioning Tool; use to eliminate sag from catenary cable. Never tighten cable before load is attached; Never over-tighten cable   |

## Additional Information

### SUSPENDING LIGHT STRINGS:

Light sockets must be suspended so that bulbs are facing down only. **DO NOT MOUNT THE LIGHT STRINGS WITH SOCKETS FACING UPWARD!**

- Light string must be securely attached to a support structure at each end of each span. The maximum unsupported span distance for 48' Cord & Plug Light String is 20 feet (10 sockets).
- Secure light string to supporting hardware (eyebolts, brackets, etc., not provided) using cable ties (not included). See Figure 1.
- Ensure any cut ends are properly sealed to preclude the entrance of water.
- For spans exceeding 20 feet, use properly rated cable support system and cable ties (neither are provided with the light string) and follow local codes for suspended cables and loads. See [www.americanlighting.com](http://www.americanlighting.com) for steel cable support systems, if needed.

