

DM150 HIGH EFFICACY RETROFIT

Easy Replacement for 95% of Traditional Fixtures



DM150

RECOMMENDED APPLICATION

- Parking Lot
- Floods
- Street Lights
- Wall Packs
- Canopies
- High/Low Bays

PRODUCT CERTIFICATIONS

- ETL (UL-1598-C)
- DLC Premium Certified

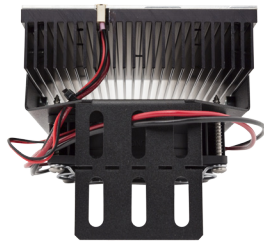
PROTECTION AGAINST

- Short Circuit
- Over-current
- Over-voltage
- Over-temperature with auto-recovery

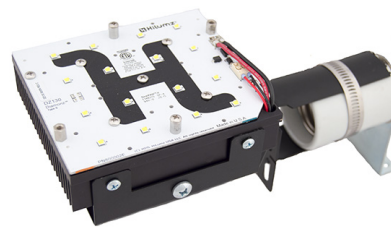
The unique design of the patent pending FlexMount™ System gives the High Efficacy Retrofit series the ability to easily retrofit a majority of fixtures whether it is a vertical or horizontal installation.



Front Angle



Back-Side



Mounted Like the DZ130



Vertical FlexMount to Mogul

Product Specs

Input Amp Rating	120V - 1.255A 277V - 0.572A
AC Input Wattage	149.87W
# of LEDs	288
Lumens	22,800
Efficacy (Lumens/Watt)	152
CRI	80+
Voltage	120-277V
Dimensions (LxWxH)	Driver: 9.0"x2.7"x1.5" Head: 6.0"x4.5"x3" Plate : 10.5"x14.5" Plate extends from 14.75" to 21.5"
Weight	Head: 2.4 lbs Total Shipping: 7 lbs

Performance Specs

LED L70 Life Hours	>100,000 @ 55°C
Beam Angle	115°
Operating Temp	-40° to +50°C
Color Temp	5000K 4000K

Additional Features

SUNON® Maglev Fan Technology	70,000+ hours operating life sustainable 24/7 operation
Mounting	Patent pending FlexMount™ mounting system or universal plates, to fit most/any HID fixture.



Intertek



**REPLACES
600W HID**

HiLumzUSA.com | sales@HiLumzUSA.com | O: 678.867.9200 | F: 404.537.1900

Copyright © HiLumz USA LLC, 2015-2016. All Rights Reserved. Product and Company Names mentioned herein may be trademarks of their respective owners. Product enhancements may result in specification changes without notice. Specifications are deemed accurate, but not guaranteed. Contact us for most current information.

DM150 HIGH EFFICACY RETROFIT

Easy Replacement for 95% of Traditional Fixtures



HILUMZ DIAMONZ 5 YEAR WARRANTY

5-year warranty on components, including the LEDs, fan, heat sink, etc. and same warranty on the LED Driver. See full warranty on website HiLumzUSA.com

30-DAY MONEY BACK SATISFACTION GUARANTEE

Limit of 2 Retrofit Kits per customer trial. Includes shipping costs.

ORDERING INFORMATION

Build your SKU code by selecting the options in each column below. Use the number in bold as the numbers/characters to create the appropriate SKU code. See the following example.

ORDER SHEET

Order Example: HiLumz® Diamonz® DM150 - 5000K Temp - 80CRI - 277V - 120W Driver - Horizontal Mount

PRODUCT	CCT & CRI	DRIVER	MOUNTING
DM150	5080	1N	H
DM150 = DM150	5080 = 5000K & 80CRI 4080 = 4000K & 80CRI	1N = 100-277V, 150W Driver 1D = 100-277V, 150W Dimmable Driver (0-10V) 2N = 200-480V, 150W Driver 2D = 200-480V, 150W Dimmable Driver (0-10V)	H = Horizontal Mount V = Vertical Mount FR = FlexTrim Plate Round FS = FlexTrim Plate Square

OTHER OPTIONS

SURGE PROTECTION

SP277
SP277 = Surge Protector - 20kA, 100-277V SP347 = Surge Protector - 20kA, 347V SP480 = Surge Protector - 20kA, 480V

PHOTO CELL SENSOR

PC120R
PC120 = Button Photo Cell 120V PC277 = Button Photo Cell 208-277V PC120R = Rotatable Photo Cell 120V

HiLumzUSA.com | sales@HiLumzUSA.com | O: 678.867.9200 | F: 404.537.1900

Copyright © HiLumz USA LLC, 2015-2016. All Rights Reserved. Product and Company Names mentioned herein may be trademarks of their respective owners. Product enhancements may result in specification changes without notice. Specifications are deemed accurate, but not guaranteed. Contact us for most current information.