



LED SECURITY WALLPACK WITH PHOTOCELL

► **DESIGN** - LED SECURITY WALLPACK has die-cast aluminum housing and anti-glare PC lens with even light distribution. It is also Wet Locations rated.

► **VARIETY** - The fixture is designed to operate on 120V or 120-277V with power adjustable option.

► **PHOTOCELL** - The built-in Dusk to Dawn Photocell will automatically activate/deactivate the fixture depending on the time of day. The photocell can be disabled with on-off switch.

► **COLOR SELECTABLE** - You can choose between 3,000 K warm white, 4,000 K cool white, and 5,000 K daylight white color temperatures, and change the power output.

► **INSTALLATION** - The fixture can be installed on the junction box or directly on the wall, making it an ideal commercial or industrial solution for various outdoor security lighting applications, including wall perimeter lighting, garages, storage areas, porches, entranceways, staircases, and more.

► **ADVANTAGES** - These fixtures have a lifespan of up to 167,000 hours and are designed to last for decades under normal use. ASD provides a 5-year limited warranty, along with ETL certification, to ensure top quality and safety of its products.

► OPTIONS:

MODELS WITH BATTERY BACKUP - The led security wallpack model with built-in battery backup provides 90 minutes of power in the case of an emergency.

Catalog number	
Notes	
Type	



Model	Watts	Voltage	Dimmable	Lumens	CCT	Finish	Dimensions (LxWxH)	Pre-installed
SWP-PC WITH PHOTOCELL								
ASD-SWP-28BR-PC	28W	120 V	-	up to 3,403 lm	3CCT (3,000/4,000/5,000 K)	Bronze	8-1/8" x 8-1/8" x 3-11/16"	Photocell
ASD-SWP-MV-A28BR-PC	20/24/28W	120-277 V	0-10 V	up to 3,454 lm	3CCT (3,000/4,000/5,000 K)	Bronze	8-1/8" x 8-1/8" x 3-11/16"	Photocell
SWP-PC-EM WITH BATTERY BACK-UP AND PHOTOCELL								
ASD-SWP-MV-A28BR-PC-5EM	20/24/28W	120-277 V	0-10 V	up to 3,454 lm	3CCT (3,000/4,000/5,000 K)	Bronze	6-11/16" x 4"	5W Battery back-up, Photocell

For detailed luminous flux information please refer to Annex 1.

ANNEX 1

Model	Watts	3,000 K	4,000 K	5,000 K
ASD-SWP-28BR-PC	28W	3,147 lm	3,403 lm	3,223 lm
ASD-SWP-MV-A28BR-PC ASD-SWP-MV-A28BR-PC-5EM	20W	2,574 lm	2,690 lm	2,702 lm
	24W	3,056 lm	3,203 lm	3,170 lm
	28W	3,350 lm	3,513 lm	3,454 lm

For most up-to-date spec sheets please refer to asd-lighting.com

ASD LIGHTING CORP

E-mail: orders@asd-lighting.com | Web site: www.asd-lighting.com





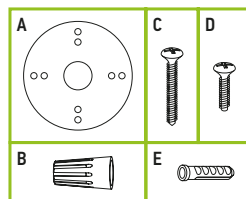
LED SECURITY WALLPACK WITH PHOTOCELL

PRODUCT SPECIFICATIONS:

Construction & Materials		
Housing	Aluminum	
Lens	PC	
Finish	Bronze	
Weight	ASD-SWP-28BR-PC	1.7 lbs (0.8 kg)
	ASD-SWP-MV-A28BR-PC	1.9 lbs (0.9 kg)
	ASD-SWP-MV-A28BR-PC-5EM	2.4 lbs (1.1 kg)
Environmental system		
Work environment	Suitable for Wet Locations, IP65	
Operating temperature	-40°F to 122°F (-40°C to 50°C)	
L-70 Life	R > 102,000 hrs; C > 167,000 hrs	
Optical system		
Color temperature	3CCT switch (3,000/4,000/5,000 K), 5,000 K by default	
CRI	> 80	
Electrical system		
Input voltage	Regular voltage: 120 V	
	Regular multi voltage:120-277 V	
Max input current	0.24 A	
Inrush current (Action time)	ASD-SWP-28BR-PC	15 A (0.5 S)
	ASD-SWP-MV-A28BR-PC	30 A (1 S)
	ASD-SWP-MV-A28BR-PC-5EM	
Off state power	0W	
Power consumption	ASD-SWP-28BR-PC	28W
	ASD-SWP-MV-A28BR-PC	20/24/28W
	ASD-SWP-MV-A28BR-PC-5EM	
Power factor	> 0.9	
Output voltage	ASD-SWP-28BR-PC	126 V
	ASD-SWP-MV-A28BR-PC	85 V
	ASD-SWP-MV-A28BR-PC-5EM	
Max output current	ASD-SWP-28BR-PC	0.2 A
	ASD-SWP-MV-A28BR-PC	0.28 A
	ASD-SWP-MV-A28BR-PC-5EM	
Surge protection DM/CM	ASD-SWP-28BR-PC	2 kV / 2 kV
	ASD-SWP-MV-A28BR-PC	1 kV / 2 kV
	ASD-SWP-MV-A28BR-PC-5EM	
Dimming range		
10-100%		
Dimming compatible controls		
Brand	Lutron	Leviton
Models	DVSTV-453P	IP710-LFZ
Regular and voluntary certifications		
5-year limited warranty (3-year limited warranty for ASD-SWP-28BR-PC model)		
DesignLights Consortium (DLC) listed (Classification: Premium)		
Main: Outdoor luminaires; General application: Low output;		
Primary use: Outdoor non-cutoff and semi-cutoff wall-mounted area luminaires		
UL certified E473804		

PACKAGE CONTENTS:



Description	Quantity
LED Security Wallpack with photocell	1
EVA gasket (A)	1
Wire nut (B)	3
Self-tapping screw (C)	2
Screw (D)	2
Anchor (E)	2
Box	1

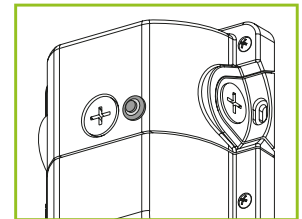


BUILT-IN BATTERY BACK-UP INFORMATION

Specifications	
Input voltage	100-277 Vac 50/60 Hz
Voltage	78.5 V
Input current	50 mA
Output current	75 mA
Output power	5W
Lumen	764 lm
Emergency time	≥ 90 minutes
Indicator light	Illuminated test switch
Battery	LiFePO4 battery - 6.4 V/2000 mAh
Charging time	≥ 24 hours

STANDARD OPERATION DISPLAY STATUS:

Button	Remarks
 ON	Charging mode, Battery is fully charged, AC power is ON
 OFF	Emergency mode, Battery is discharging, AC power is OFF



BUILT-IN PHOTOCELL INFORMATION

Specifications	model: SWP	model: SWP-MV
Light level to turn ON	≤ 15 lux (1.4 fc) (night time)	≤ 10 lux (0.9 fc) (night time)
Light level to turn OFF	≥ 20 lux (1.8 fc) (day time)	
Operating temperature	-40°F to 122°F (-40°C to 50°C)	

The dusk-to-dawn sensor automatically turns the fixture off during daylight hours.



LED SECURITY WALLPACK WITH PHOTOCELL

INSTALLATION GUIDE

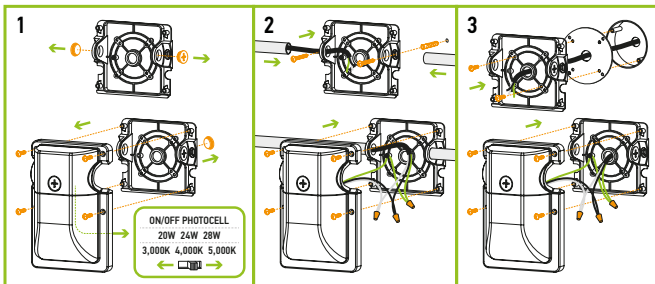
IMPORTANT SAFETY INFORMATION:

Please read all the instructions below before installation!

- ▶ Make sure that the supply voltage corresponds to the rated product voltage.
- ▶ The product must be installed by a qualified electrician in accordance with the National Electrical Code and corresponding local codes.
- ▶ If the product is damaged, do not use it.

INSTALLATION STEPS:

1. Loosen the screws on each side of the fixture and remove the back plate. Adjust the color temperature and wattage by sliding the switch to your desired settings. Knock out two screw holes on the back plate. If you are performing a surface installation, remove the threaded plug from the side of the backplate. For outlet box installation, remove the plug in the middle of the backplate.
2. For **surface installation** drill two appropriately sized holes into the mounting surface and insert the included anchors. Attach the supplied foam mounting pad between the wall and plate for water-resistance before securing the plate. Attach the back plate by twisting the two self-tapping screws into the anchors. Insert 1/2" conduit into the fixture and connect Black to Black, White to White, and Green to Green wires. Reattach the main fixture body to the backplate and securely tighten with screws.
3. For **outlet box installation**, attach the supplied foam mounting pad between the wall and the backplate for water resistance before securing the backplate to the wall. Feed the wires from the outlet box into the fixture through the center hole, and secure the fixture to the outlet box using the appropriate screws. Ensure you use the supplied gasket to create a weather-tight seal. Connect Black to Black, White to White, and Green to Green wires. Reattach the main fixture body to the backplate and securely tighten with screws.



⚠ WARNING

Risk of personal injury – read and follow all warnings and installation instructions. Keep or give to the owner for future reference.

Risk of cuts: Wear gloves to prevent cuts or abrasions when removing from carton, handling, installing, and maintaining this product.

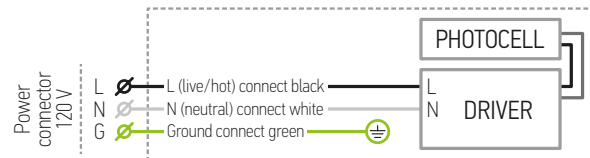
Risk of electric shock: This product must be installed in accordance with the applicable installation code by a person familiar with the construction and operation of the product and the hazards involved.

Risk of Fire: Minimum 194°F supply conductors. Consult a qualified electrician to ensure correct branch circuit conductor.

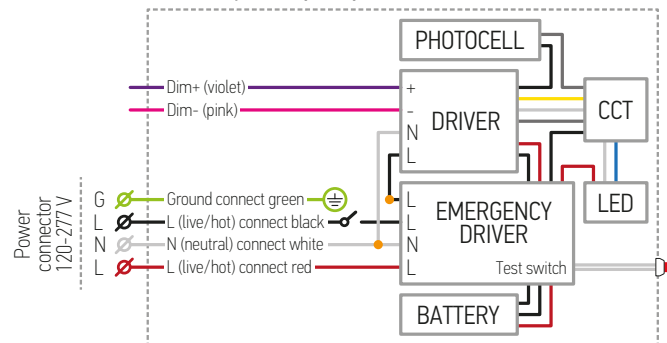
ASD® assumes no responsibility for claims arising out of improper or careless Installation or handling of this product.

ELECTRICAL SCHEMATIC DIAGRAM:

SWP-PC with photocell:



SWP-MV-PC-EM with battery back-up and photocell:



ORDERING INFORMATION

Model	UPC	Pcs. (pack) per carton	Carton size	Carton weight	GTIN 14
SWP-PC WITH PHOTOCELL					
ASD-SWP-28BR-PC	810128117968	6	9.7" x 13.4" x 11.2"	11.2 lbs	10810128117965
ASD-SWP-MV-A28BR-PC	810128117975	6	9.7" x 13.4" x 11.2"	12.7 lbs	10810128117972
SWP-PC-EM WITH BATTERY BACK-UP AND PHOTOCELL					
ASD-SWP-MV-A28BR-PC-5EM	810128117982	6	9.7" x 13.4" x 11.2"	15.3 lbs	10810128117989

For most up-to-date spec sheets please refer to asd-lighting.com

ASD LIGHTING CORP

E-mail: orders@asd-lighting.com | Web site: www.asd-lighting.com

