



# VANITY LIGHT & MINI-PENDANT

## VF27 and MP27 series

► **DESIGN** - VANITY LIGHT and MINI-PENDANT have a sleek, classic design that will help transform any space in your home. Durable housing resistant to rust and impact provides many years of service. The clear glass shades grant you even light distribution. It is designed to operate on 120V circuits.

► **BULBS** - The fixture includes a standard E26 medium base which is compatible with a variety of incandescent, CFL or LED bulbs less than 60W.

► Quick and easy hardwired installation.

► **APPLICATION** - These fixtures create a bright light. VANITY LIGHT is perfect for bathroom spaces or any other common areas. MINI-PENDANT is perfect for kitchen tables, bars, living room sitting areas, and workshops. You can hang these pendants one by one or in a group to create a specific style. They are also Damp Locations rated.

► **ADVANTAGES** - ASD provides a 5-year limited warranty along with ETL certification to guarantee top quality products and safety!

Catalog number	
Notes	
Type	



VF27-21



VF27-31



VF27-41

Model	Bulb type	Finish	Shade	Dimensions (LxWxH)
<b>VF27 VANITY LIGHT</b>				
ASD-VF27-21-2660-NK	2 x E26 60W max	Nickel	Clear glass	15-5/16" x 7-7/8" x 10-11/16"
ASD-VF27-31-2660-NK	3 x E26 60W max	Nickel	Clear glass	22-5/8" x 7-7/8" x 10-11/16"
ASD-VF27-41-2660-NK	4 x E26 60W max	Nickel	Clear glass	31-1/4" x 7-7/8" x 10-11/16"
<b>MP27 MINI-PENDANT</b>				
ASD-MP27-11-2660-NK	1 x E26 60W max	Nickel	Clear glass	5-1/2" x 5-1/2" x 46-3/4"

For most up-to-date spec sheets please refer to [asd-lighting.com](http://asd-lighting.com)



# VANITY LIGHT & MINI-PENDANT

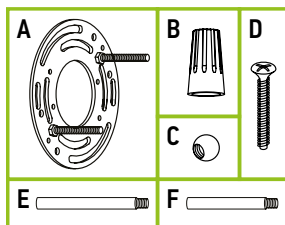
## VF27 and MP27 series

### PRODUCT SPECIFICATIONS:

Construction & Materials			
Housing	Steel		
Finish	Nickel		
Shade	Clear glass		
Weight	ASD-VF27-2I-2660-NK	3.2 lbs (1.5 kg)	
	ASD-VF27-3I-2660-NK	4.2 lbs (1.9 kg)	
	ASD-VF27-4I-2660-NK	5.4 lbs (2.4 kg)	
	ASD-MP27-1I-2660-NK	2.4 lbs (1.1 kg)	
Environmental system			
Work environment	Suitable for Damp Locations		
Operating temperature	-4°F to 122°F (-20°C to 50°C)		
Electrical system			
Input voltage	120 V		
Regular and voluntary certifications			
5-year limited warranty			
cETLus certified 4001256			

### PACKAGE CONTENTS:

Description	Q-ty
Vanity Light or Mini-Pendant	1
Mounting bracket (A)	1
Wire nut (B)	3
Decorative cap nut (C)	2
Mounting screw (D)	2
Steel rod 12" (E) only for Mini-Pendant	2
Steel rod 6" (F) only for Mini-Pendant	2
Box	1



## INSTALLATION GUIDE

### IMPORTANT SAFETY INFORMATION:

Please read all the instructions below before installation.

- ▶ The product must be installed by a qualified electrician in accordance with the National Electrical Code and corresponding local codes.
- ▶ If the product is damaged, do not use it.

### ⚠ WARNING

**RISK OF PERSONAL INJURY – READ and follow all WARNINGS and installation instructions.** Keep or give to the owner for future reference.

**Risk of cuts:** Wear gloves to prevent cuts or abrasions when removing from carton, handling, installing, and maintaining this product.

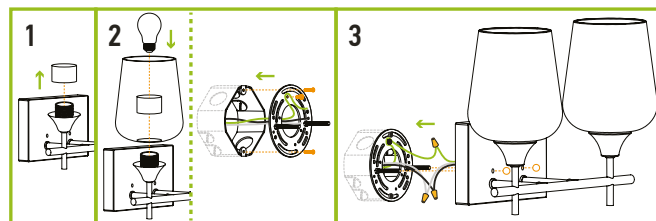
ASD® assumes no responsibility for claims arising out of improper or careless installation or handling of this product.

## ORDERING INFORMATION

Model	UPC	Pcs. per carton	Carton size	Carton weight	GTIN 14
<b>VF27 VANITY LIGHT</b>					
ASD-VF27-2I-2660-NK	810128110914	2	16.3" x 15.8" x 13.8"	10.4 lbs	10810128110911
ASD-VF27-3I-2660-NK	810128110921	2	23" x 15.8" x 13.8"	14 lbs	10810128110928
ASD-VF27-4I-2660-NK	810128110938	2	31.3" x 15.8" x 13.8"	17.9 lbs	10810128110935
<b>MP27 MINI-PENDANT</b>					
ASD-MP27-1I-2660-NK	810128110907	4	15.8" x 15.8" x 13.8"	15.7 lbs	10810128110904

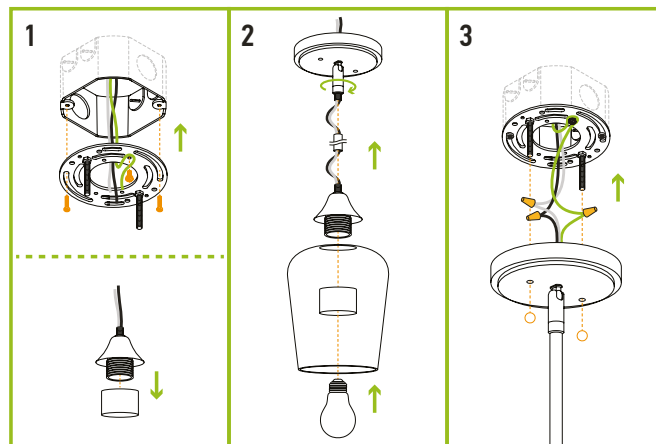
### INSTALLATION STEPS VANITY LIGHT:

1. Remove the metal Ring from the E26 socket.
2. Attach the Glass Shade and secure it with the metal ring. Insert a bulb in the socket. Attach the mounting plate to the outlet box using two mounting screws.
3. Connect the wires: Black to Black, White to White, Ground to Ground. Secure the connection with wire nuts. Carefully tuck all wires back into the outlet box. Place the fixture on the wall by aligning the protruding mounting plate screws through the appropriate holes and tighten the fixture to the wall using two decorative cap nuts.



### INSTALLATION STEPS MINI-PENDANT:

1. Attach the mounting plate to the outlet box using two screws. Remove the metal Ring from the E26 socket.
2. Attach the Glass Shade and secure it with the metal ring. Insert a bulb in the socket. Prepare the rods to achieve preferred drop length from 6" till 36". Pull the fixture wires through the rods and ceiling plate. Assemble together Glass Shade base, rods and ceiling plate.
3. Connect the wires: Black to Black, White to White, Ground to Ground. Secure the connection with wire nuts. Carefully tuck all wires back into the outlet box. Place the fixture to the outlet box by aligning the protruding mounting plate screws through the appropriate holes. Tighten the ceiling plate to the mounting plate using two decorative cap nuts.



For most up-to-date spec sheets please refer to [asd-lighting.com](http://asd-lighting.com)