



PROJECT NAME

CATALOG NO.

TYPE

DATE

NOTE

LED IP RATED HIGH BAY

RWUX Series
High Bay

DESCRIPTION

The Alphalite RWUX Series Slim Round LED High Bay delivers high lumen output, long life, economic solution, and no restrike time. This energy-efficient LED luminaire offers one-to-one replacement of existing HID or fluorescent high bays. Precision-formed reflectors delivers adequate light in high mounting applications. Modular driver and LED arrays. Economic solution to optimize payback. Capable of being operated with occupancy (PIR an Microwave) sensor.

APPLICATION

Various commercial industrial applications with high ceilings: warehouse, manufacturing facilities, retail, gymnasiums, grocery.

SPECIFICATION FEATURES

Benefits

- Attractive ROI
- Lower energy costs
- High quality light for a more productive space
- Field adjustable light output and CCT
- Field install sensor in 5 seconds

Construction

Rugged die-cast aluminum housing withstands environments without climate control. Outer surface treated with durable powder coating to provide resistance to corrosion, rust, weathering, and UV degradation. Performance-engineered, integral heat dissipation fins and LED thermal substrate provides superior thermal management for long life and reliability.

Electrical

Luminaire utilizes long life, high efficacy LEDs and a highly efficient, reliable LED driver. Standard with 6ft wire lead. 120-347V input voltage for increased versatility. Comes equipped with quick disconnect for compliance with US code.

Mounting

Comes standard equipped with threads hole for 1/2 threads stem (not provided) and attach a hook mount. Optional ring mount kit, surface mount, or add an adapter RWUX-PMK3/4 (G1/2 to 3/4) for outside diameter 3/4" threads stem, stem not provided.

Optics

One piece precision molded polycarbonate. High light reflectivity reflectors. 90° beam angle comes in standard.

Finish

Outer surface treated with durable powder coating in black color to provide resistance to corrosion, rust, weathering, and UV degradation.

Certifications / Regulatory

cULus listed. All components have safety approvals. IP65 rated. Meets NSF for food zone option: splash zone and non-food zone.

Warranty

5-year limited warranty. See complete warranty terms for details.



Quick Ship Product

- RWUX-(150/100/75)/8A
- RWUX-(240/200/150)/8A
- RWUX-(240/200/150)/8A-WH

ORDERING INFORMATION

Sample Number: RWUX-(150/100/75)/8A

Series	Lumen Package		CRI	CCT	Voltage
RWUX - LED IP Rated High Bay	(150/100/75) - 150/100/75W, 22500/15000/11250lm	(240/200/150) - 240/200/150W, 36000/30000/22500lm	8 - 80+ CRI	A - Adjustable CCT (5000/4000/3500K)	(Blank) - 120-347V 480 - 277-480V

Beam Angle	Lens Type	Color	Control Option	EM Option
(Blank) - 90° B120 - 120°	(Blank) - Transparent F - Frosted	(Blank) - Black WH - White	MMS-DC-PIR4T - PIR motion sensor and daylight sensor, field install in 5 seconds (Required RC-100 Sensor Configuration Tool) MMS-DC4T - Microwave motion sensor and daylight sensor, field install in 5 seconds (Required RC-100 Sensor Configuration Tool)	EM-RM40W-GN - 40W emergency backup (Required RC-RN1 as remote control)

Accessories

- RWUX-RAL - Aluminium sliver Reflector cone
- RWUX-RPC - PC Reflector cone
- RWUX-SMK - adjustabel Surface Mount Kit
- RWUX-PMK3/4 - Pendant mount adapter for outside diameter 3/4" threads stem (Stem not provided)
- RWUX-WG - Wire Guard
- RWUX-RMK - Ring Mount Kit
- RWUX-NSF - NSF rated kit for food splash zone

SUMMARY

Input Voltage	120-347V
Input Frequency	50/60 Hz
Power Factor	> 0.9
THD (Max.)	< 20%
Efficacy	150 LPW
Controls/ Dimming	Full Range 0-10V dimming standard
Dimming Range	10-100%
CRI	> 80
CCT	3500/4000/5000K Selectable
Operating Temp.	-22 to +122F° (-30 to +50C°)
Rated Life	70,000 hours
IP Grade	IP65

ENERGY PERFORMANCE DATA

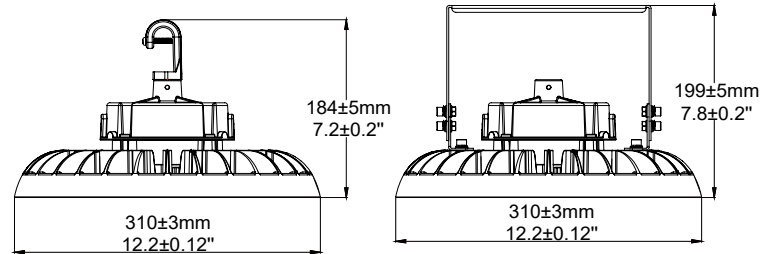
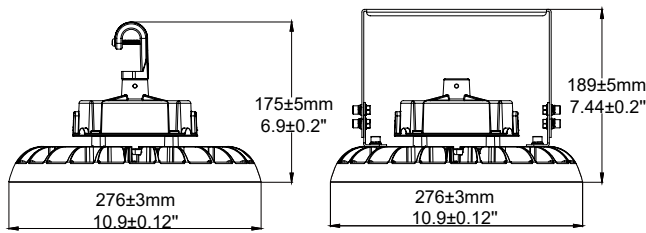
Part No.	Rated Wattage (W)	Delivered Lumens (lm)	Efficacy (lm/W)
RWUX-(150/100/75)/8A	150/100/75	22500/15000/11250	150
RWUX-(240/200/150)/8A	240/200/150	36000/30000/22500	150

PHYSICAL PARAMETERS

DIMENSION

RWUX-(150/100/75)

RWUX-(240/200/150)



MOUNTING OPTION

RWUX-RMK

RWUX-SMK

RWUX-PMK3/4



REFLECTOR OPTION

RWUX-RAL

RWUX-RPC

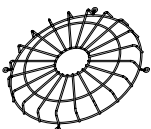


CONTROL OPTION

RWUX-WG

Emergency Backup

Sensor



MMS-DC-PIR4T

MMS-DC4T

