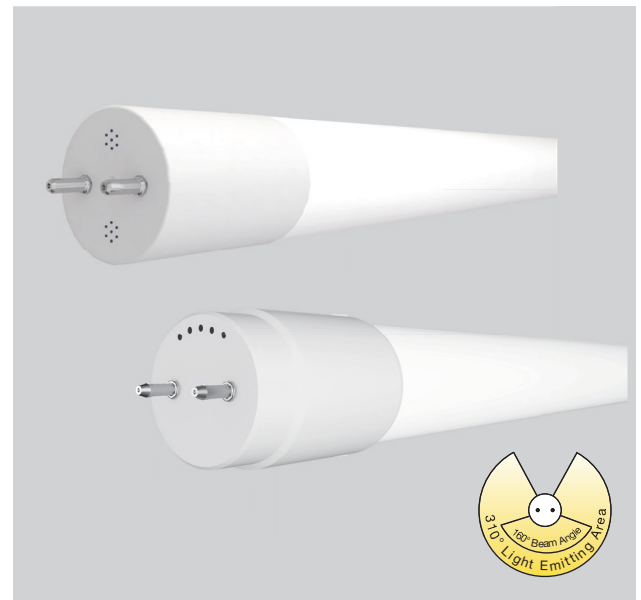


|               |       |
|---------------|-------|
| Project Name: | Type: |
| Part Number:  | Date: |

# SINGLE ENDED BYPASS T8

## FEATURES

- T8 tube 2' / 3' / 4' / U bent
- CCT: 3000K, 3500K, 4000K, 5000K
- Ultra high efficacy version up to 167lm/W available
- Built-in universal voltage driver, operates on 120-277V line input
- Opaque glass provides glare free, even lighting with a 310° light emitting area
- Suitable for damp locations and totally enclosed fixtures
- NSF (National Sanitation Foundation) certified for Food Zone (Non-Contact), Splash, and Non-Food Zones
- Fixture operating temperature: -4°F to 95°F (-20°C to 35°C)
- Lamp ambient temperature: -4°F to 113°F (-20°C to 45°C)
- Rated lifetime(L70) up to: 60,000hrs
- 5 year limited warranty\* / 10 year available  
(see EXTENDED WARRANTIES table for information)



050923



## SPECIFICATIONS

| Product | Model               | Nominal Length | Equiv. | Input Voltage | Life (hrs) | Wattage | Lumens | CCT   | CRI | Efficacy (LPW) | Power Factor | THD  | Beam Angle | DLC / NSF |
|---------|---------------------|----------------|--------|---------------|------------|---------|--------|-------|-----|----------------|--------------|------|------------|-----------|
| 36961   | 8T8/2F/830/BYP/RC   | 2'             | 17W    | 120-277V      | 60,000     | 8       | 1,000  | 3000K | 82  | 125            | 0.9          | <20% | 160°       | √/√       |
| 36962   | 8T8/2F/835/BYP/RC   | 2'             | 17W    | 120-277V      | 60,000     | 8       | 1,000  | 3500K | 82  | 125            | 0.9          | <20% | 160°       | √/√       |
| 36963   | 8T8/2F/840/BYP/RC   | 2'             | 17W    | 120-277V      | 60,000     | 8       | 1,050  | 4000K | 82  | 131            | 0.9          | <20% | 160°       | √/√       |
| 36964   | 8T8/2F/850/BYP/RC   | 2'             | 17W    | 120-277V      | 60,000     | 8       | 1,050  | 5000K | 82  | 131            | 0.9          | <20% | 160°       | √/√       |
| 36965   | 12T8/3F/830/BYP/RC  | 3'             | 25W    | 120-277V      | 60,000     | 12      | 1,500  | 3000K | 82  | 125            | 0.9          | <20% | 160°       | √/√       |
| 36966   | 12T8/3F/835/BYP/RC  | 3'             | 25W    | 120-277V      | 60,000     | 12      | 1,500  | 3500K | 82  | 125            | 0.9          | <20% | 160°       | √/√       |
| 36967   | 12T8/3F/840/BYP/RC  | 3'             | 25W    | 120-277V      | 60,000     | 12      | 1,550  | 4000K | 82  | 129            | 0.9          | <20% | 160°       | √/√       |
| 36968   | 12T8/3F/850/BYP/R   | 3'             | 25W    | 120-277V      | 60,000     | 12      | 1,550  | 5000K | 82  | 129            | 0.9          | <20% | 160°       | √/√       |
| 98379   | 10.5T8/4F/830/BYP   | 4'             | 32W    | 120-277V      | 60,000     | 10.5    | 1,650  | 3000K | 82  | 157            | 0.9          | <20% | 160°       | √/√       |
| 98380   | 10.5T8/4F/835/BYP   | 4'             | 32W    | 120-277V      | 60,000     | 10.5    | 1,650  | 3500K | 82  | 157            | 0.9          | <20% | 160°       | √/√       |
| 98381   | 10.5T8/4F/840/BYP   | 4'             | 32W    | 120-277V      | 60,000     | 10.5    | 1,750  | 4000K | 82  | 167            | 0.9          | <20% | 160°       | √/√       |
| 98382   | 10.5T8/4F/850/BYP   | 4'             | 32W    | 120-277V      | 60,000     | 10.5    | 1,750  | 5000K | 82  | 167            | 0.9          | <20% | 160°       | √/√       |
| 36969   | 13T8/4F/830/BYP/RC  | 4'             | 32W    | 120-277V      | 60,000     | 13      | 1,700  | 3000K | 82  | 131            | 0.9          | <20% | 160°       | √/√       |
| 36970   | 13T8/4F/835/BYP/RC  | 4'             | 32W    | 120-277V      | 60,000     | 13      | 1,700  | 3500K | 82  | 131            | 0.9          | <20% | 160°       | √/√       |
| 36971   | 13T8/4F/840/BYP/RC  | 4'             | 32W    | 120-277V      | 60,000     | 13      | 1,750  | 4000K | 82  | 134            | 0.9          | <20% | 160°       | √/√       |
| 36972   | 13T8/4F/850/BYP/RC  | 4'             | 32W    | 120-277V      | 60,000     | 13      | 1,750  | 5000K | 82  | 134            | 0.9          | <20% | 160°       | √/√       |
| 98476   | 14.5T8/4F/835/BYP   | 4'             | 32W    | 120-277V      | 60,000     | 14.5    | 2,100  | 3500K | 82  | 145            | 0.9          | <20% | 160°       | √/√       |
| 98473   | 14.5T8/4F/840/BYP   | 4'             | 32W    | 120-277V      | 60,000     | 14.5    | 2,200  | 4000K | 82  | 152            | 0.9          | <20% | 160°       | √/√       |
| 98474   | 14.5T8/4F/850/BYP   | 4'             | 32W    | 120-277V      | 60,000     | 14.5    | 2,200  | 5000K | 82  | 152            | 0.9          | <20% | 160°       | √/√       |
| 36973   | 16T8/4F/840/BYP/RC  | 4'             | 32W    | 120-277V      | 60,000     | 16      | 2,100  | 4000K | 82  | 131            | 0.9          | <20% | 160°       | √/√       |
| 36974   | 16T8/4F/850/BYP/RC  | 4'             | 32W    | 120-277V      | 60,000     | 16      | 2,100  | 5000K | 82  | 131            | 0.9          | <20% | 160°       | √/√       |
| 36975   | 20.5T8/4F/840/BYP/R | 4'             | 40W**  | 120-277V      | 60,000     | 20.5    | 2,950  | 4000K | 82  | 141            | 0.9          | <20% | 160°       | √/√       |
| 36976   | 20.5T8/4F/850/BYP/R | 4'             | 40W**  | 120-277V      | 60,000     | 20.5    | 2,950  | 5000K | 82  | 141            | 0.9          | <20% | 160°       | √/√       |
| 98162   | 17T8U6/830/BYP/R    | U-6            | 32W    | 120-277V      | 60,000     | 17      | 2,100  | 3000K | 82  | 124            | 0.9          | <20% | 160°       | √/ N.A.   |
| 35460   | 17T8U6/835/BYP/R    | U-6            | 32W    | 120-277V      | 60,000     | 17      | 2,100  | 3500K | 82  | 124            | 0.9          | <20% | 160°       | √/ N.A.   |
| 98163   | 17T8U6/840/BYP/R    | U-6            | 32W    | 120-277V      | 60,000     | 17      | 2,300  | 4000K | 82  | 135            | 0.9          | <20% | 160°       | √/ N.A.   |
| 98164   | 17T8U6/850/BYP/R    | U-6            | 32W    | 120-277V      | 60,000     | 17      | 2,300  | 5000K | 82  | 135            | 0.9          | <20% | 160°       | √/ N.A.   |

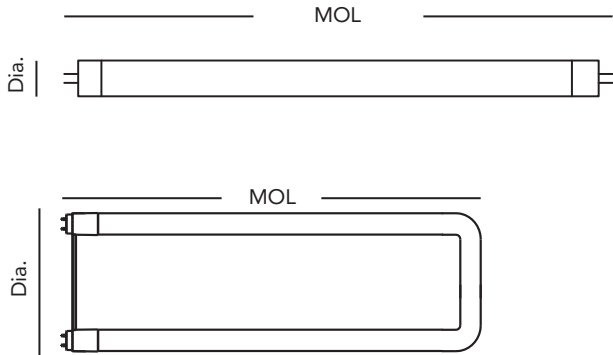
\* Please visit [www.greencreative.com](http://www.greencreative.com) for Limited Warranty terms.

\*\* Replace 40W T10/T12 lamps or 32W T8 lamps.



# SINGLE ENDED BYPASS T8

## DIMENSION & WEIGHT



| Model               | Base | MOL       | Dia.    | Weight |
|---------------------|------|-----------|---------|--------|
| 8T8/2F/8xx/BYP/RC   | G13  | 23-3/4"   | 1.0"    | 0.24lb |
| 12T8/3F/8xx/BYP/RC  | G13  | 35-3/4"   | 1.0"    | 0.32lb |
| 10.5T8/4F/8xx/BYP   | G13  | 47-13/16" | 1.0"    | 0.57lb |
| 13T8/4F/8xx/BYP/RC  | G13  | 47-13/16" | 1.0"    | 0.47lb |
| 14.5T8/4F/8xx/BYP   | G13  | 47-13/16" | 1.0"    | 0.57lb |
| 16T8/4F/8xx/BYP/RC  | G13  | 47-13/16" | 1.0"    | 0.47lb |
| 20.5T8/4F/8xx/BYP/R | G13  | 47-13/16" | 1.0"    | 0.53lb |
| 17T8U6/8xx/BYP/R    | G13  | 22-7/16"  | 7-1/16" | 0.53lb |

Where xxx means 824-965 which indicates CRI and color temperature

## INSTALLATION

Diagram A – Non-Shunted

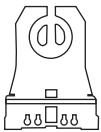
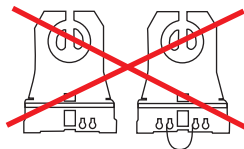
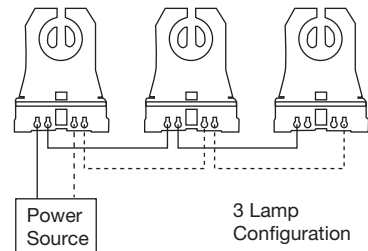


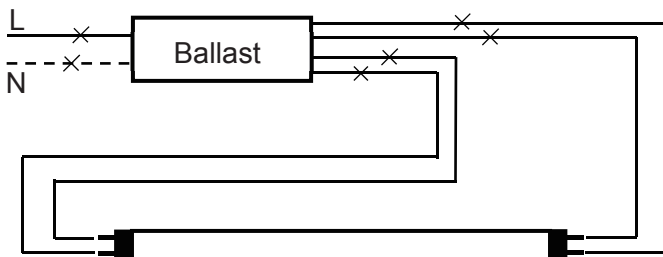
Diagram B – Shunted



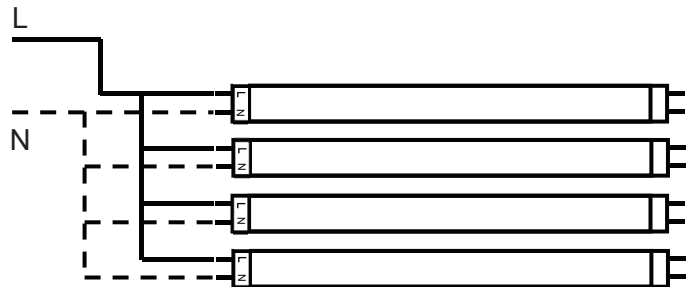
This lamp is compatible with non-shunted lamp holder ONLY.



### TUBE



Step 1. Cut all wires connected to the existing ballast, remove the ballast.



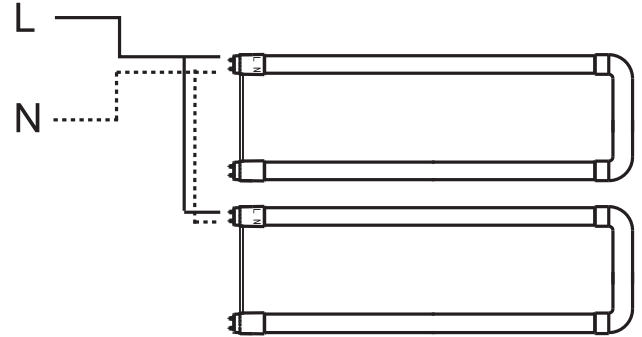
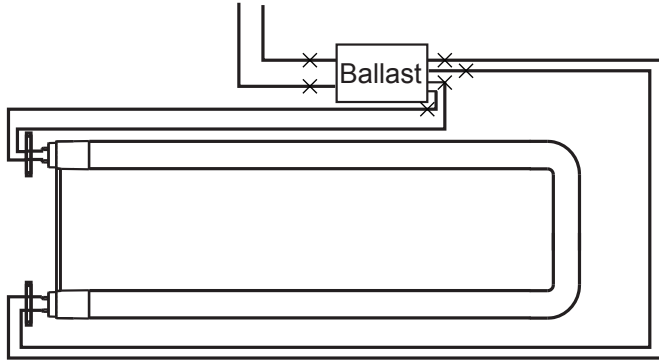
Step 2. If shunted lamp holders are used in the existing fixture, replace them with non-shunted holders first. Wire the holders and lamps according to the diagram.



# SINGLE ENDED BYPASS T8

## INSTALLATION

### U-BENT



## ACCESSORY ORDERING INFORMATION

| Product | Model            | Description   | Pictures | Dimensions |
|---------|------------------|---|----------|------------|
| 98003   | 23EMDRIVER       | California Title 20 Compliant 23W Emergency LED Driver (Field Installation) |          |            |
| 58012   | 35EMINVERTER***  | 35W Emergency Inverter (Field Installation)                                 |          |            |
| 58013   | 35EMINVERTER/CEC | California Title 20 Compliant 35W Emergency Inverter (Field Installation)   |          |            |

\*\*\*Does not meet Title 20 appliance requirements, not for use in California

## EXTENDED WARRANTIES\*\*\*\*

| Model                        | Description*****                          |
|------------------------------|---|
| 8T8/2F/BYP/10YEARWARRANTY    | 10 Year warranty for 8T8/2F/8xx/BYP/yy    |
| 12T8/3F/BYP/10YEARWARRANTY   | 10 Year warranty for 12T8/3F/8xx/BYP/yy   |
| 10.5T8/4F/BYP/10YEARWARRANTY | 10 Year warranty for 10.5T8/4F/8xx/BYP/yy |
| 13T8/4F/BYP/10YEARWARRANTY   | 10 Year warranty for 13T8/4F/8xx/BYP/yy   |
| 14.5T8/4F/BYP/10YEARWARRANTY | 10 Year warranty for 14.5T8/4F/8xx/BYP/yy |
| 16T8/4F/BYP/10YEARWARRANTY   | 10 Year warranty for 16T8/4F/8xx/BYP/yy   |
| 20.5T8/4F/BYP/10YEARWARRANTY | 10 Year warranty for 20.5T8/4F/8xx/BYP/yy |
| 17T8/U6/BYP/10YEARWARRANTY   | 10 Year warranty for 17T8U6/8xx/BYP/yy    |

\*\*\*\* Warranty based on a maximum of 4,368 annual operating hours (per year for ten years) and exposure to a maximum fixture operating temperature of 80°F / 27°C.  
\*\*\*\*\* xx - Refers to the CCT yy - Refers to model generations within the same nominal performance. Typically blank, 'R', or 'RC'



# SINGLE ENDED BYPASS T8

## CERTIFICATION INFORMATION

| Product | Model              | DLC ID#      |
|---------|--------------------|--------------|
| 98379   | 10.5T8/4F/830/BYP  | PLQIQC0PLP7P |
| 98380   | 10.5T8/4F/835/BYP  | PLM4U8W5M90Z |
| 98381   | 10.5T8/4F/840/BYP  | PL299HA1S71O |
| 98382   | 10.5T8/4F/850/BYP  | PLO0PTXQ2MZM |
| 98476   | 14.5T8/4F/835/BYP  | PLOM0T0BMP06 |
| 98473   | 14.5T8/4F/840/BYP  | PLHPIVUMTFJH |
| 98474   | 14.5T8/4F/850/BYP  | PLUKSTKW1NC6 |
| 98162   | 17T8U6/830/BYP/R   | PL0K2H4PRESH |
| 35460   | 17T8U6/835/BYP/R   | PLD92RAO4HH7 |
| 98163   | 17T8U6/840/BYP/R   | PLDUCDLE7QGO |
| 98164   | 17T8U6/850/BYP/R   | PL3ODG0X88EX |
| 36965   | 12T8/3F/830/BYP/RC | S-FCWQ4V     |
| 36966   | 12T8/3F/835/BYP/RC | S-FGKDLN     |
| 36967   | 12T8/3F/840/BYP/RC | S-1TC8F6     |
| 36968   | 12T8/3F/850/BYP/R  | S-YP2TBC     |
| 36969   | 13T8/4F/830/BYP/RC | S-FV6N7I     |
| 36970   | 13T8/4F/835/BYP/RC | S-AMCU60     |
| 36971   | 13T8/4F/840/BYP/RC | S-5KWXFI     |
| 36972   | 13T8/4F/850/BYP/RC | S-6OEJKX     |

## ORDERING INFORMATION

| Model               | Master Carton |                         |             | Shipping Carton |                                 |             |
|---------------------|---------------|-------------------------|-------------|-----------------|---------------------------------|-------------|
|                     | Case Qty      | Case Dimensions (LxWxH) | Case Weight | Case Qty        | Case Dimensions (LxWxH)         | Case Weight |
| 8T8/2F/xxx/BYP/RC   | NA            | NA                      | NA          | 25PCS           | 25-1/4" x 7-1/2" x 7-5/16"      | 7.4 lb      |
| 12T8/3F/xxx/BYP/RC  | NA            | NA                      | NA          | 25PCS           | 37-3/8" x 7-7/16" x 7-1/4"      | 10.25 lb    |
| 10.5T8/4F/xxx/BYP   | NA            | NA                      | NA          | 25PCS           | 48-13/16" x 5-15/16" x 5-15/16" | 13.6 lb     |
| 13T8/4F/xxx/BYP/RC  | NA            | NA                      | NA          | 25PCS           | 49-1/8" x 7-7/16" x 7-1/8"      | 13.7 lb     |
| 14.5T8/4F/xxx/BYP   | NA            | NA                      | NA          | 25PCS           | 48-13/16" x 5-15/16" x 5-15/16" | 13.6 lb     |
| 16T8/4F/xxx/BYP/RC  | NA            | NA                      | NA          | 25PCS           | 49-1/8" x 7-7/16" x 7-1/8"      | 13.7 lb     |
| 20.5T8/4F/xxx/BYP/R | NA            | NA                      | NA          | 25PCS           | 49-1/8" x 7-7/16" x 7-1/8"      | 14.6 lb     |
| 17T8U6/xxx/BYP/R    | NA            | NA                      | NA          | 12PCS           | 24-7/16" x 17-1/8" x 10-5/8"    | 12.7 lb     |

Where xxx means 824-965 which indicates CRI and color temperature

Note: All rights reserved. All sizes and specifications are subject to change at any time without notice.