



FMLSQ Switchable White LED Low Profile Square Flush Mount

1.5" Square Nightlight Flush Mount with Interchangeable Trim

Project:
Fixture Type:
Location:
Contact/Phone:

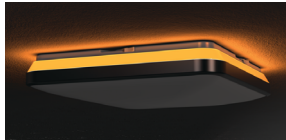
FMLSQ Series



**FMLSQ 15IN
Black Trim**



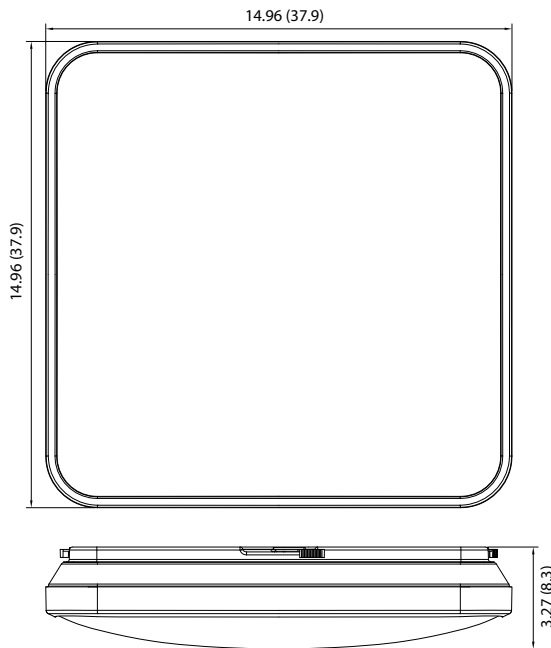
**FMLSQ 15IN
White Trim**



Nightlight Mode



Dimensions



Product Features

The square low profile 15in. LED Flush Mount with integrated Nightlight feature is the perfect combination of modern design and innovative LED technology. A white and black trim ring included to interchange the design to compliment any decor. An integrated 5CCT switch (2700K/3000K/4000K/5000K) allows the end user to fine-tune the feel of their space to insure the right amount of light. The Nightlight feature, by toggling the switch, illuminates a soft Amber glow around the fixture providing warm ambient lighting.

Applications

- NIGHTLIGHT MODE: Integrated 1800K Amber color glows around fixture by activating by wall switch - toggle ON/OFF/ON.
- Easy-latch secures diffuser to housing, ceiling mount only
- Ideal for new construction or renovation in residential single and multi-family applications as well as light commercial
- Ideal for kitchens, hallways, bedrooms, bathrooms, and utility rooms
- Installs directly into industry standard junction boxes
- Suitable for use in closets, compliant when installed to NFPA® 70 NEC® Section 410.16 (A)(1) and (C)(1)

Performance

Delivered Lumens	Up to 1840L
LED Color Temperature	2700K/3000K/3500K/4000K/5000K
CRI	90+
Voltage	Dedicated 120V
Dimming	Phase Dimming down to 10%

Specifications

	Width	Depth	Lens Opening
FMLSQ 15IN	14.96"	14.96"	15"

All dimensions are inches (centimeters) unless otherwise indicated.

LIGHTING PERFORMANCE DATA DONNÉES SUR LE RENDEMENT DE L'ÉCLAIRAGE	
Light Appearance (CCT) Aspect de la lumière (CCT)	
2700K soft white blanc doux	1748 lumens 67 lumens per watt
3000K warm white blanc chaud	1790 lumens 68 lumens per watt
3500K neutral white blanc neutre	1828 lumens 70 lumens per watt
4000K cool white blanc froid	1835 lumens 70 lumens per watt
5000K daylight blanc neutre	1786 lumens 68 lumens per watt
Watts	26
Color Accuracy (CRI)	90
Précision des couleurs (CRI)	



FMLSQ Switchable White LED Low Profile Square Flush Mount

1.5" Square Nightlight Flush Mount with Interchangeable Trim



**FMLSQ 15IN
Black Trim**



**FMLSQ 15IN
White Trim**

ORDERING INFORMATION

Low Profile Flush Mount

Example: FMLSQ 15IN SWW5 90CRI WBT NL M4

Series	Size	Color Temperature	CRI	Trim Ring Finish	Nightlight
FMLSQ Low Profile Flush Mount	15IN 15 inches	SWW5 2700K/3000K/3500K/4000K/5000K	90CRI 90CRI	WBT White/Black Trim Ring	NL Nightlight Mode

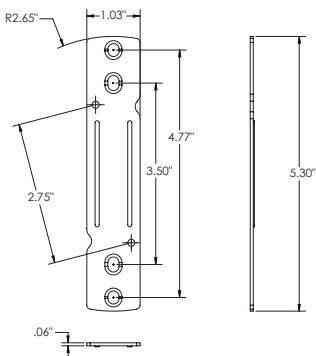
JBOX Compatibility

	3-1/2" Octagon Box Steel	4" Drawn Octagon 1-1/2" Deep Steel	3-1/2" Drawn Round Ceiling Pan Steel / Old Work	4" Round Plastic / New York	4" Drawn Round Ceiling Pan Steel	4" Round Plastic / New Work	4" Dia. Ceiling Box With Bar Plastic / New York
Exterior LXWXH	3.2" x 3.2" x 1.55"	3.54" x 3.54" x 1.55"	3.38" Rd. x 0.5" Dep.	4" Dia. x 2.3"	4" Dia. x 0.5" Dep.	4" Dia. x 2.375"	14.5" x 4.5" x 4"
Mounting Dimension	2.75"	3.5"	2.75"	2.75" / 3.5"	3.5"	2.75" / 3.5"	2.75" / 3.5"

	4" Square Box*	WiringPro 4" Square Box*	Iberville 4" Octagonal Box*
Exterior LXWXH	4" x 4" x 1.5"	4" X 4" X 1.5"	4" x 4" x 1.5"
Mounting Dimension	4"	4"	4"

* When ordering these junction boxes for Canada requires JSBTADAPTR 4IN CNDA M50.

Canadian 4IN J-Box Bracket



JSBTADPTR 4IN CNDA M50

Dimmer Compatibility

Forward Phase Dimmers	Reverse Phase Dimmers	Acuity Brands Dimmers
Lutron Maestro Rocker style 120V 600W/MAC1-153M/STCL-153	Lutron Diva ELV® single pole 120V 300W/DVELV-300P	Acuity SensorSwitch® Forward phase paddle dimmer/WPD WH
Lutron RadioRa 250W Resi Dimmer/RRD-PRO	Lutron Maestro ELV® single pole 120V 600W/MAELV-600	
Lutron Vive Wireless dimmer w/ neutral 120V 600W/MRF2S-6ND	Lutron Vive® Wireless Reverse-phase 120V 600W/MRF2S-6ELV	
Lutron Caseta Wireless in-wall 150W/PD-6WCL	Lutron Caseta® Reverse-Phase 120V 150W/PD-5NE	
Leviton SureSlide INC 3-way 120V 600W/6674-10W		
Leviton Illumatech® INC single pole 120V 600W/1PLO6-10Z		



FMLSQ Switchable White LED Low Profile Square Flush Mount

1.5" Square Nightlight Flush Mount with Interchangeable Trim



**FMLSQ 15IN
Black Trim**



**FMLSQ 15IN
White Trim**

Specifications

Construction

Low profile white acrylic diffuser and steel pan • Milky white acrylic, diffuser dome lens conceals the LEDs from direct view and provides uniform lens luminance.

LED Light Engine

LED board mounted directly to steel pan designed to provide superior thermal management and ensure long life • Switchable white LED color temperature technology offers 2700K/3000K/3500K/4000K/5000K all in one flush mount • 90 CRI minimum • Accommodates 120 volts AC at 60Hz.

Electrical Connections

Fixture provided with leads for direct wire connection in JBox.

Installation

Junction Box Mounting

The driverless FMLSQ installs directly into industry standard junction boxes that requires no separate mounting bracket for installation • Compatible boxes include 3-1/2" and 4" octagon junction boxes (1-1/2" minimum depth), round mud rings with 2-3/4" mounting centers, and 3" & 4" diameter non-metallic boxes • Provides fast installation of fully assembled fixture to JBox • Suitable for ceiling mount only • Suitable for use in closets, compliant when installed to NFPA® 70 NEC® Section 410.16 (A)(1) and (C)(1).

Life

High performance, long functional life of 50,000 hrs (L70).

Labels

CSA certified to US and Canadian safety standards • ENERGY STAR® Certified • Damp location listed • Certified to the high efficacy requirements of California T24 JA8-2022.

Testing

All reports are based on published industry procedures; field performance may differ from laboratory performance.

Warranty 5-year limited warranty. This is the only warranty provided and no other statements in this specification sheet create any warranty of any kind. All other express and implied warranties are disclaimed. Complete warranty terms located at: www.acuitybrands.com/support/warranty/terms-and-conditions

Note: Actual performance may differ as a result of end-user environment and application.

All values are design or typical values, measured under laboratory conditions at 25 °C.

Specifications subject to change without notice.

Nightlight Mode Operation

The nightlight feature glows a soft warm hue around the fixture with a simple flip of the switch:





FMLSQ Switchable White LED Low Profile Square Flush Mount

1.5" Square Nightlight Flush Mount with Interchangeable Trim



**FMLSQ 15IN
Black Trim**



**FMLSQ 15IN
White Trim**

PHOTOMETRICS

Distribution Curve

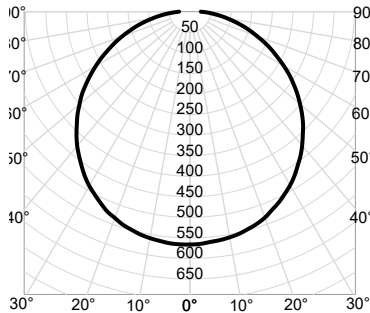
Distribution Data

Output Data

Coefficient of Utilization

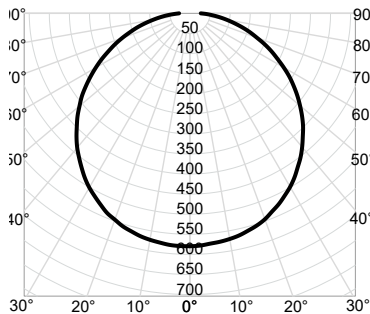
ILLUMINANCE DATA AT 30" ABOVE
FLOOR FOR A SINGLE LUMINAIRE

FMLSQ 15IN SWW5 90CRI WBT NL 27K Input Watts: 26.0, Delivered Lumens: 1748, LPW: 67.2, S/MH: 1.27, Test No: ISF 231966P1



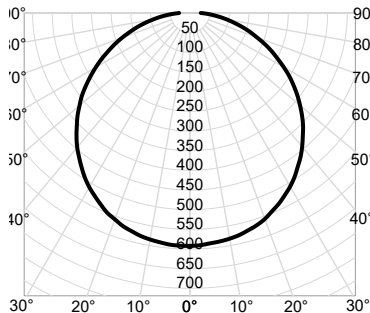
CP Summary	Zonal Lumen Summary				Coefficients of Utilization										Cone of Light			Luminance (cd/sq.m)	
	0°	Zone	Lumens	% Fixture	pf pc	20%										Mounting Height	Initial FC Center Beam	Beam Diameter	Average Luminance
						50%	30%	10%	50%	30%	10%	50%	30%	10%					
	0°	0° - 30°	445	25%	0	119	119	119	116	116	116	110	110	110	6.0	15.7	19.1	0°	3,900
	5°	0° - 40°	732	42%	1	102	98	94	100	96	92	95	92	89	8.0	8.8	25.5	45°	3,508
	15°	0° - 60°	1,307	75%	2	89	81	75	87	80	74	83	77	72	10.0	5.7	31.9	55°	3,319
	25°	0° - 90°	1,726	99%	3	78	69	62	76	68	62	73	66	60	12.0	3.9	38.2	65°	3,044
	35°	90° - 180°	22	1%	4	69	59	53	67	59	52	64	57	51	14.0	2.9	44.6	75°	2,699
	45°	0° - 180°	1,748	100%	5	61	52	45	60	51	45	58	50	44	Beam Angle: 115.8°			85°	2,300
	55°		308		6	55	46	39	54	45	39	52	44	39	Field Angle: 169.7°				
	65°		219		7	50	41	35	49	40	34	47	40	34					
	75°		132		8	45	37	31	45	36	31	43	36	30					
	85°		56		9	42	33	28	41	33	28	40	32	27					
	90°		26		10	38	30	25	38	30	25	37	30	25					

FMLSQ 15IN SWW5 90CRI WBT NL 30K Input Watts: 26.0, Delivered Lumens: 1790, LPW: 68.8, S/MH: 1.27, Test No: ISF 231966P2



CP Summary	Zonal Lumen Summary				Coefficients of Utilization										Cone of Light			Luminance (cd/sq.m)	
	0°	Zone	Lumens	% Fixture	pf pc	20%										Mounting Height	Initial FC Center Beam	Beam Diameter	Average Luminance
						50%	30%	10%	50%	30%	10%	50%	30%	10%					
	0°	0° - 30°	456	25%	0	119	119	119	116	116	116	110	110	110	6.0	16.1	19.1	0°	3,994
	5°	0° - 40°	749	42%	1	102	98	94	100	96	92	95	92	89	8.0	9.1	25.5	45°	3,592
	15°	0° - 60°	1,338	75%	2	89	81	75	87	80	74	83	77	72	10.0	5.8	31.9	55°	3,398
	25°	0° - 90°	1,768	99%	3	78	69	62	76	68	62	73	66	60	12.0	4.0	38.2	65°	3,117
	35°	90° - 180°	23	1%	4	69	59	53	67	59	52	64	57	51	14.0	3.0	44.6	75°	2,763
	45°	0° - 180°	1,790	100%	5	61	52	45	60	51	45	58	50	44	Beam Angle: 115.8°			85°	2,355
	55°		315		6	55	46	39	54	45	39	52	44	39	Field Angle: 169.7°				
	65°		224		7	50	41	35	49	40	34	47	40	34					
	75°		135		8	45	37	31	45	36	31	43	36	30					
	85°		57		9	42	33	28	41	33	28	40	32	27					
	90°		27		10	38	30	25	38	30	25	37	30	25					

FMLSQ 15IN SWW5 90CRI WBT NL 35K Input Watts: 26.0, Delivered Lumens: 1828, LPW: 70.3, S/MH: 1.27, Test No: ISF 231966P3



CP Summary	Zonal Lumen Summary				Coefficients of Utilization										Cone of Light			Luminance (cd/sq.m)	
	0°	Zone	Lumens	% Fixture	pf pc	20%										Mounting Height	Initial FC Center Beam	Beam Diameter	Average Luminance
						50%	30%	10%	50%	30%	10%	50%	30%	10%					
	0°	0° - 30°	466	25%	0	119	119	119	116	116	116	110	110	110	6.0	16.4	19.1	0°	4,078
	5°	0° - 40°	765	42%	1	102	98	94	100	96	92	95	92	89	8.0	9.3	25.5	45°	3,669
	15°	0° - 60°	1,367	75%	2	89	81	75	87	80	74	83	77	72	10.0	5.9	31.9	55°	3,470
	25°	0° - 90°	1,805	99%	3	78	69	62	76	68	62	73	66	60	12.0	4.1	38.2	65°	3,183
	35°	90° - 180°	23	1%	4	69	59	53	67	59	52	64	57	51	14.0	3.0	44.6	75°	2,822
	45°	0° - 180°	1,828	100%	5	61	52	45	60	51	45	58	50	44	Beam Angle: 115.8°			85°	2,405
	55°		322		6	55	46	39	54	45	39	52	44	39	Field Angle: 169.7°				
	65°		229		7	50	41	35	49	40	34	47	40	34					
	75°		138		8	45	37	31	45	36	31	43	36	30					
	85°		58		9	42	33	28	41	33	28	40	32	27					
	90°		28		10	38	30	25	38	30	25	37	30	25					



FMLSQ Switchable White LED Low Profile Square Flush Mount

1.5" Square Nightlight Flush Mount with Interchangeable Trim



**FMLSQ 15IN
Black Trim**



**FMLSQ 15IN
White Trim**

PHOTOMETRICS

Distribution Curve

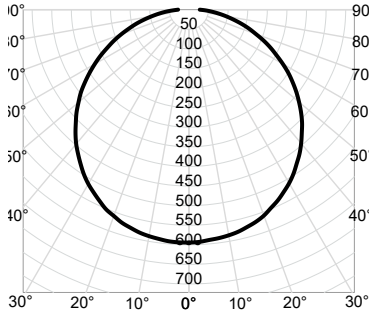
Distribution Data

Output Data

Coefficient of Utilization

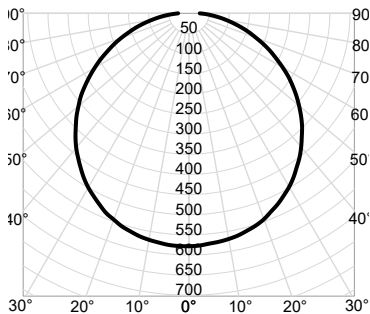
Illuminance Data at 30" Above
Floor for a Single Luminaire

FMLSQ 15IN SWW5 90CRI WBT NL 40K Input Watts: 26.0, Delivered Lumens: 1835, LPW: 70.6, S/MH: 1.27, Test No: ISF 231966P4



CP Summary	Zonal Lumen Summary				Coefficients of Utilization										Cone of Light			Luminance (cd/sq.m)	
	0°	Zone	Lumens	% Fixture	pf	80%		70%		50%		Mounting Height	Initial FC Center Beam	Beam Diameter	Average Luminance				
						pc	pw	50%	30%	10%	50%					30%	10%	50%	30%
0°	594	0° - 30°	467	25%	0	119	119	119	116	116	116	110	110	110	6.0	16.5	19.1	0°	4,094
5°	590	0° - 40°	768	42%	1	102	98	94	100	96	92	95	92	89	8.0	9.3	25.5	45°	3,683
15°	574	0° - 60°	1,372	75%	2	89	81	75	87	80	74	83	77	72	10.0	5.9	31.9	55°	3,484
25°	537	0° - 90°	1,812	99%	3	78	69	62	76	68	62	73	66	60	12.0	4.1	38.2	65°	3,195
35°	479	90° - 180°	23	1%	4	69	59	53	67	59	52	64	57	51	14.0	3.0	44.6	75°	2,833
45°	408	0° - 180°	1,835	100%	5	61	52	45	60	51	45	58	50	44	Beam Angle: 115.8°			85°	2,414
55°	323				6	55	46	39	54	45	39	52	44	39	Field Angle: 169.7°				
65°	230				7	50	41	35	49	40	34	47	40	34					
75°	138				8	45	37	31	45	36	31	43	36	30					
85°	58				9	42	33	28	41	33	28	40	32	27					
90°	28				10	38	30	25	38	30	25	37	30	25					

FMLSQ 15IN SWW5 90CRI WBT NL 50K Input Watts: 26.0, Delivered Lumens: 1786, LPW: 68.7, S/MH: 1.27, Test No: ISF 231966P5



CP Summary	Zonal Lumen Summary				Coefficients of Utilization										Cone of Light			Luminance (cd/sq.m)	
	0°	Zone	Lumens	% Fixture	pf	80%		70%		50%		Mounting Height	Initial FC Center Beam	Beam Diameter	Average Luminance				
						pc	pw	50%	30%	10%	50%					30%	10%	50%	30%
0°	578	0° - 30°	455	25%	0	119	119	119	116	116	116	110	110	110	6.0	16.1	19.1	0°	3,985
5°	574	0° - 40°	748	42%	1	102	98	94	100	96	92	95	92	89	8.0	9.0	25.5	45°	3,584
15°	559	0° - 60°	1,335	75%	2	89	81	75	87	80	74	83	77	72	10.0	5.8	31.9	55°	3,391
25°	523	0° - 90°	1,764	99%	3	78	69	62	76	68	62	73	66	60	12.0	4.0	38.2	65°	3,110
35°	467	90° - 180°	23	1%	4	69	59	53	67	59	52	64	57	51	14.0	3.0	44.6	75°	2,757
45°	397	0° - 180°	1,786	100%	5	61	52	45	60	51	45	58	50	44	Beam Angle: 115.8°			85°	2,350
55°	315				6	55	46	39	54	45	39	52	44	39	Field Angle: 169.7°				
65°	224				7	50	41	35	49	40	34	47	40	34					
75°	135				8	45	37	31	45	36	31	43	36	30					
85°	57				9	42	33	28	41	33	28	40	32	27					
90°	27				10	38	30	25	38	30	25	37	30	25					