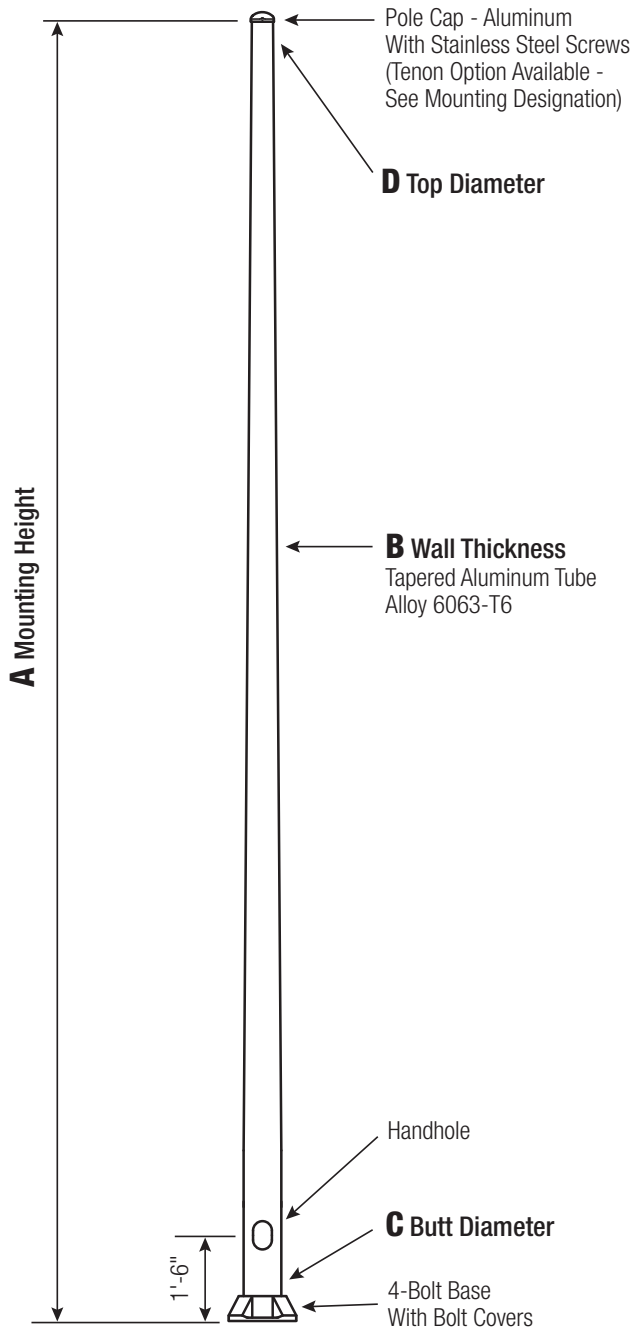


RTA

Round Tapered Aluminum Pole No Arm — 4-Bolt Base



Satin Aluminum or Powder Coated Finish per Customer Specification.

C BUTT DIA.	D TOP DIA.	F BOLT CIR. DIA.	G BASE SQ.	H BOLT PROJ.	I BOLT SIZE
4	3	6.5 - 8	7.5	2	.75 x 17 x 3
5	3	7.5 - 8	7.5	2	.75 x 17 x 3
6	4.5	9 - 10	9.75	2.75	.75 x 30 x 3*
7	4.5	10 - 11	10.5	2.75	1 x 36 x 4
8	4.5	11 - 12	11.25	2.75	1 x 36 x 4
9	4.5	12.5 - 14	12.75	2.75	1 x 36 x 4
10 Up To .250"	6	14 - 15	14	3.25	1 x 48 x 4
10 .312"	6	14 - 15	14	3.25	1.25 x 48 x 6

*1" x 36" x 4" Anchor Bolts can be specified for 6" butt diameter poles.

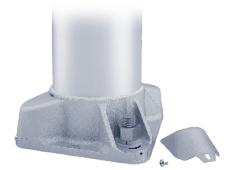
Dimensions in Inches

Pole

The pole shaft will be constructed of seamless extruded tube of 6063 Aluminum Alloy per the requirements of ASTM B221. The shaft assembly shall be full-length heat treated after base weld to produce a T6 temper.

Base Style

4-Bolt Cast Aluminum Base Flange of Alloy 356-T6 with Aluminum Bolt Covers (Alloy 356-F) and Stainless Steel Hex Head Attaching Screws.



Handhole

4"-5" Butt Diameters - 2" x 4" Handhole with curved Lap Style Aluminum Door and two (2) SS Self-Tapping Attaching Screws. A Grounding Provision incorporating a tapped 1/4"-20NC hole is provided.

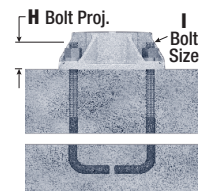
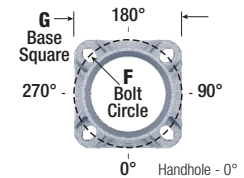
6" Butt Diameter - Reinforced, 3" x 5" curved Cast Aluminum Frame (Alloy 356-T6) with Aluminum Door and two (2) SS Hex Head Screws. A Grounding Provision incorporating a 3/8" diameter hole is provided opposite the Handhole.

7"+ Butt Diameters - Reinforced, 4" x 6" curved Cast Aluminum Frame (Alloy 356-T6) with Aluminum Door and two (2) SS Hex Head Screws. Reinforced Frame will contain a tapped 3/8"-16NC Grounding Provision.

Anchorage

Anchorage Kit will include four (4) L-shaped Steel Anchor Bolts conforming to AASHTO M314-90 Grade 55. Ten inches (10") of threaded end will be galvanized per ASTM A153.

Kits will contain four (4) Hex Nuts, four (4) Lock Washers, and four (4) Flat Washers (all components Galvanized Steel). A bolt circle template will be provided.



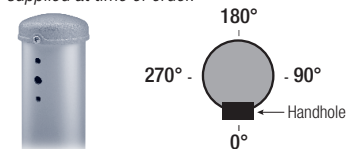
Vibration Damper

When determined necessary by Hapco, a Vibration Damper will be factory-installed inside the pole shaft. Customer specification of the damper is available.

Mounting Designation

Side Drill Mount

For Side Drill Mount applications specify luminaire type, quantity and orientation. A luminaire drilling template must be supplied at time of order.



Tenon Mount - Welded or Spun

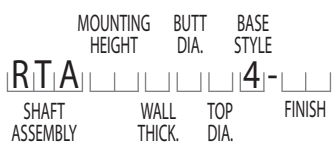
For Tenon Mount applications specify both Tenon diameter (2.375", 2.875", 3.5", etc.) and length (3", 4", etc.). Tenon style is factory option. Welded Tenon can be specified.



A Mtg. Hgt.	B WALL THICKNESS	C BUTT DIAMETER	TOTAL LUM. WEIGHT	MAXIMUM EPA					OLD CAT. NUMBER	CATALOG NUMBER
				90	100	110	120	130		
06	0.125"	4	100	17.6	14.2	13.2	11.0	9.2	78-001	RTA06B4A4-**-
08	0.125"	4	100	11.8	9.4	8.6	7.0	5.8	78-002	RTA08B4A4-**-
08	0.188"	4	100	17.2	13.8	12.8	10.6	8.8	78-015	RTA08D4A4-**-
10	0.125"	4	75	8.4	6.6	6.0	4.8	4.0	78-003	RTA10B4A4-**-
10	0.188"	4	100	12.6	10.0	9.2	7.4	6.2		RTA10D4A4-**-
10	0.125"	5	100	16.6	13.0	12.2	10.0	8.2	78-012	RTA10B5A4-**-
10	0.188"	5	100	24.6	19.6	18.2	15.2	12.6		RTA10D5A4-**-
12	0.125"	4	50	6.4	4.8	4.4	3.4	2.6	78-004	RTA12B4A4-**-
12	0.188"	4	85	9.6	7.4	6.8	5.6	4.4	78-018	RTA12D4A4-**-
12	0.125"	5	100	12.6	10.0	9.2	7.4	6.0	78-009	RTA12B5A4-**-
12	0.156"	5	100	16.0	12.6	11.6	9.6	7.8	78-009W3	RTA12C5A4-**-
12	0.188"	5	100	19.2	15.2	14.2	11.6	9.6	78-009W4	RTA12D5A4-**-
14	0.125"	4	25	4.8	3.6	3.2	2.4	1.8	78-005	RTA14B4A4-**-
14	0.188"	4	60	7.6	5.8	5.2	4.0	3.2	78-019	RTA14D4A4-**-
14	0.125"	5	90	10.0	7.6	7.0	5.6	4.4	78-010	RTA14B5A4-**-
14	0.156"	5	100	12.8	9.8	9.0	7.4	6.0	78-021	RTA14C5A4-**-
14	0.188"	5	100	15.4	12.0	11.2	9.0	7.4	78-022	RTA14D5A4-**-
16	0.188"	4	35	6.0	4.4	4.0	3.0	2.2	78-027	RTA16D4A4-**-
16	0.125"	5	60	8.0	6.0	5.4	4.2	3.2	78-011	RTA16B5A4-**-
16	0.156"	5	85	10.2	7.8	7.2	5.6	4.6	78-029	RTA16C5A4-**-
16	0.156"	5	90	9.8	7.4	6.6	5.2	4.4	51-002S48	RTA16C5B4-**-
16	0.188"	5	100	12.6	9.8	9.0	7.2	5.8	78-030	RTA16D5A4-**-
16	0.188"	6	100	24.2	19.0	17.6	14.6	12.2		RTA16D6B4-**-
18	0.125"	5	40	6.4	4.6	4.2	3.0	2.2	78-007	RTA18B5A4-**-
18	0.156"	5	60	8.2	6.2	5.6	4.2	3.4	78-031	RTA18C5A4-**-
18	0.188"	5	85	10.2	7.8	7.0	5.4	4.4	78-032	RTA18D5A4-**-
18	0.156"	6	100	16.2	12.4	11.6	9.4	7.8		RTA18C6B4-**-
18	0.188"	6	100	20.0	15.6	14.4	11.8	10.0		RTA18D6B4-**-
18	0.156"	7	100	24.0	18.8	17.4	14.4	12.0		RTA18C7B4-**-
20	0.125"	5	30	5.0	3.4	3.0	2.0	1.4	78-008	RTA20B5A4-**-
20	0.156"	5	40	6.6	4.8	4.2	3.2	2.2	78-033	RTA20C5A4-**-
20	0.188"	5	55	8.4	6.2	5.6	4.2	3.2		RTA20D5A4-**-
20	0.125"	6	85	10.0	7.4	6.8	5.4	4.4	51-001	RTA20B6B4-**-
20	0.156"	6	100	13.2	10.0	9.2	7.4	6.2	51-002	RTA20C6B4-**-
20	0.188"	6	100	16.6	12.8	11.8	9.6	8.0	51-003	RTA20D6B4-**-
20	0.156"	7	100	20.2	15.6	14.4	11.8	10.0	51-004	RTA20C7B4-**-
20	0.188"	7	100	24.8	19.6	18.0	14.8	12.4	51-005	RTA20D7B4-**-
20	0.156"	8	100	28.0	22.2	20.6	17.0	14.2	51-006	RTA20C8B4-**-
20	0.188"	8	100	34.4	27.2	25.4	21.0	17.6	51-007	RTA20D8B4-**-
25	0.156"	6	60	8.0	5.6	5.0	4.0	3.2	51-062	RTA25C6B4-**-
25	0.188"	6	85	10.4	7.6	7.0	5.4	4.4	51-063	RTA25D6B4-**-
25	0.156"	7	100	13.0	9.8	9.0	7.2	5.8	51-064	RTA25C7B4-**-
25	0.188"	7	100	16.6	12.8	11.6	9.4	7.8	51-065	RTA25D7B4-**-
25	0.156"	8	100	19.0	14.8	13.6	11.0	9.2	51-066	RTA25C8B4-**-
25	0.188"	8	100	23.8	18.6	17.2	14.0	11.8	51-067	RTA25D8B4-**-
25	0.219"	8	100	28.4	22.2	20.6	17.0	14.2	51-068	RTA25E8B4-**-
25	0.250"	8	100	32.8	25.8	24.0	19.8	16.6	51-069	RTA25F8B4-**-
25	0.156"	9	100	25.8	20.2	18.8	15.4	13.0		RTA25C9B4-**-
25	0.156"	10	100	33.6	27.0	25.0	20.8	17.4		RTA25C1C4-**-
30	0.156"	7	60	8.4	5.8	5.2	4.0	3.0	51-124	RTA30C7B4-**-
30	0.188"	7	90	11.0	8.0	7.2	5.6	4.6	51-125	RTA30D7B4-**-
30	0.156"	8	100	13.0	9.6	8.8	7.0	5.6	51-126	RTA30C8B4-**-
30	0.188"	8	100	16.8	12.6	11.6	9.4	7.6	51-127	RTA30D8B4-**-
30	0.219"	8	100	20.4	15.6	14.4	11.6	9.6	51-128	RTA30E8B4-**-
30	0.250"	8	100	23.8	18.4	17.0	13.8	11.6	51-129	RTA30F8B4-**-
30	0.188"	9	100	23.2	18.0	16.6	13.6	11.4	51-131	RTA30D9B4-**-
30	0.250"	9	100	32.4	25.6	23.6	19.6	16.4	51-133	RTA30F9B4-**-
30	0.188"	10	100	30.8	24.4	22.8	18.8	15.8	51-139	RTA30D1C4-**-
30	0.250"	10	100	42.4	33.8	31.6	26.2	22.0	51-141	RTA30F1C4-**-
35	0.156"	8	55	8.6	6.0	5.4	4.0	3.0	51-186	RTA35C8B4-**-
35	0.188"	8	90	11.6	8.4	7.6	5.8	4.6	51-187	RTA35D8B4-**-
35	0.219"	8	100	14.4	10.8	9.8	7.6	6.2	51-188	RTA35E8B4-**-
35	0.250"	8	100	17.4	13.0	12.0	9.6	7.8	51-189	RTA35F8B4-**-
35	0.188"	9	100	16.8	12.8	11.6	9.4	7.6	51-191	RTA35D9B4-**-
35	0.250"	9	100	24.4	19.0	17.4	14.2	11.8	51-193	RTA35F9B4-**-
35	0.188"	10	100	23.0	18.2	16.8	13.8	11.4	51-199	RTA35D1C4-**-
35	0.219"	10	100	27.8	22.0	20.4	16.8	14.0	51-200	RTA35E1C4-**-
35	0.250"	10	100	32.6	25.8	24.0	19.8	16.6	51-201	RTA35F1C4-**-
35	0.312"	10	100	41.8	33.4	31.0	25.6	21.6	51-202	RTA35G1C4-**-
40	0.188"	8	40	7.8	5.2	4.6	3.2	2.4	51-247	RTA40D8B4-**-
40	0.219"	8	70	10.0	7.0	6.2	4.6	3.6	51-248	RTA40E8B4-**-
40	0.250"	8	95	12.4	8.8	8.0	6.2	4.8	51-249	RTA40F8B4-**-
40	0.188"	9	95	11.8	8.6	7.8	6.0	4.8	51-251	RTA40D9B4-**-
40	0.250"	9	100	18.2	13.8	12.6	10.2	8.2	51-253	RTA40F9B4-**-
40	0.188"	10	100	17.0	13.2	12.2	9.8	8.0	51-259	RTA40D1C4-**-
40	0.219"	10	100	21.2	16.6	15.4	12.4	10.2	51-260	RTA40E1C4-**-
40	0.250"	10	100	25.2	19.8	18.4	15.0	12.4	51-261	RTA40F1C4-**-
40	0.312"	10	100	33.0	26.2	24.2	20.0	16.6	51-262	RTA40G1C4-**-

Catalog Number System

The catalog number for Hapco poles utilizes the following identification system.



Catalog Number Example -

RTA 30 D 8 B 4 - 01

Round Tapered Aluminum, 30' Mounting Height, .188" Wall Thickness, 8" Butt Diameter, 4.5" Top Diameter, 4-Bolt Base, Satin Aluminum Finish

Wall Thickness

- B = .125"
- C = .156"
- D = .188"
- E = .219"
- F = .250"
- G = .312"

Butt Diameter

- 4 = 4"
- 5 = 5"
- 6 = 6"
- 7 = 7"
- 8 = 8"
- 9 = 9"
- 1 = 10"

Top Diameter

- A = 3"
- B = 4.5"
- C = 6"

Base Style

4 = 4-Bolt Base

Finish

- O1 = Satin Aluminum
- BA = Black Powder Coat
- BH = White Powder Coat
- BM = Dark Bronze Powder Coat
- BV = Dark Green Powder Coat
- GC = Gray Powder Coat
- ** = Specify Finish

EPA Notes:

Effective Projected Area (EPA) in square feet. EPA's calculated using wind velocity (mph) indicated in accordance with 2009 AASHTO LTS-5 using a 25 year design life. Maximum EPA is based on the luminaire weight shown. Increased luminaire weight may reduce the maximum EPA. If weight is exceeded, or if other design life or code is required, please consult the factory.