

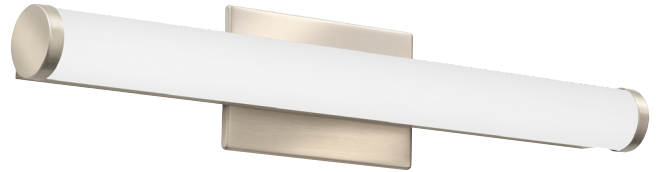


Catalog Number
Notes
Type

Contractor Select™

FMVCCCL Vanity LED

Contemporary Cylinder Vanity



The decorative vanity collection delivers elegant and contemporary lighting designs, combined with the energy efficiency and quality illumination of integrated LED technology. The LED vanity series is ideal for applications in residential, commercial, hospitality, university and multifamily settings.

FEATURES:

- Produces 1300 lumens, Standard input = 18 watts.
- Fixture is rated to deliver L70 performance at 50,000 hours and operates at 120-277 volts.



Catalog Number	UPC	Description	Lumens	Input Watts	Voltage	Color Temperature	Pallet qty.
FMVCCCL 24IN MVOLT 30K 90CRI BN M6	889804268980	2' LED Vanity	1,300	18W	MVOLT	3000K	108



Specifications

INTENDED USE:

Provides an LED lighting platform to deliver general or task lighting for residential and light commercial applications. Light engine delivers long life and excellent color to ensure a quality, low-maintenance light installation. Ideal for use in bathrooms, lavatories, hallways, corridors, stairways, utility areas and more.

CONSTRUCTION:

The Contemporary Cylinder is constructed of an acrylic diffuser with brushed nickel housing. They included canopy/junction box cover is removable for a more low-profile look (2' only). The white acrylic diffuser provides even illumination and softens the appearance of the LEDs for improved aesthetics.

OPTICS:

2' produces 1300 lumens at 3000K with 50,000 hours of life. Extruded acrylic diffuser is of highly transmissive material to minimize LED image and provides highangle brightness control.

ELECTRICAL:

Long-life LEDs, coupled with a multivolt driver, provide extended service life. Standard input = 18 watts, (2'). Fixture is rated to deliver L70 performance at 50,000 hours and operates at 120-277 volts. Use with non-dimmable switches only.

LISTINGS:

UL Listed to US and Canadian safety standards. Listed for damp locations. ENERGY STAR® certified.

WARRANTY:

5-year limited warranty. Complete warranty terms located at: www.acuitybrands.com/support/warranty/terms-and-conditions

Note: Actual performance may differ as a result of end-user environment and application. All values are design or typical values, measured under laboratory conditions at 25 °C. Specifications subject to change without notice.

Dimensions

SPECIFICATIONS	2FT
Length:	22-3/8 (568)
Weight:	2.1 (.95)
3000K Lumens (LPW)	1391 (77)

All dimensions are inches (millimeters) unless otherwise indicated. Weights are pounds (kilograms).

