

# LED PRECISION 1X4 WRAP - 88

## PRODUCT HIGHLIGHTS

- Accurately controlled light output with excellent brightness control.
- 13" width is useful in retro-fitting 1 x 4 units. The body covers unpainted ceiling when the old unit is replaced.

**EXPECTED LIFE** - Projected life of at least 60,000 hours. Contact factory for TM-21 detail.

**LEDs** - Use of closely-spaced medium-power, high-brightness chips minimizes pixelation and provides uniform lens luminance. Available in Cool White (5300°K), Neutral White (4100°K) and Warm White (3500°K) color temperatures. CRI >= 80 (CW > 70). LM-80 reports available.

**CONSTRUCTION** - The housing is die-formed 20 gauge cold-rolled steel. 20 gauge cold-rolled steel reflector with white polyester powder coated finish optionally available.

**LENS** - Extruded frosted prismatic acrylic lens. Hinges from either side without tools.

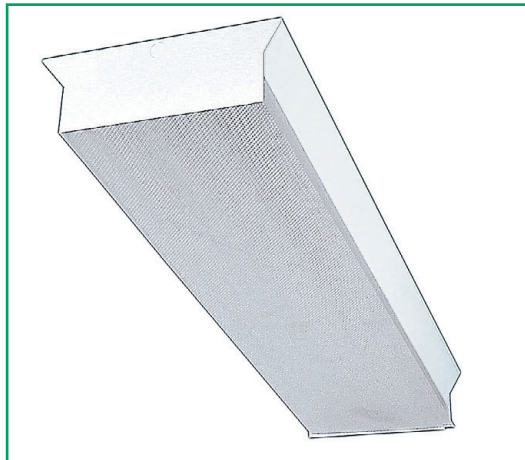
**ELECTRICAL** - Universal voltage (120-277 Vac) input, 50/60 Hz. Power factor > 0.9, THD < 20%, in-rush current < 15 Amps.

**DRIVER** - High-performance isolated driver features over-voltage, over-current and short-circuit (with auto-recovery) protection. Driver module is sealed to IP66 protection levels, with a Class A sound rating. 0-10V dimming available.

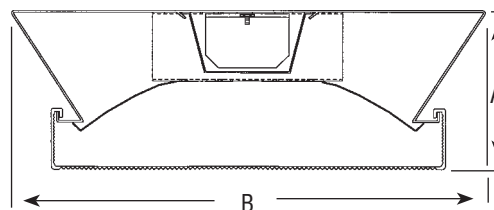
**FINISH** - All metal parts painted after fabrication following treatment with phosphate rust inhibitor. Finish coating of housing reflecting surfaces is with white, high-reflectance (minimum 92%) polyester powder.

**WARRANTY** - Limited 5-year warranty

**LISTING** - UL Listed to U.S. and Canadian safety standards. Suitable for damp locations. IBEW Union made in the U.S.A



## DIMENSIONS



Fixture	HEIGHT (A)	WIDTH (B)	LENGTH
88-4'	4-7/16" (112mm)	13" (330mm)	48" (1168mm)
88-8'	4-7/16" (112mm)	13" (330mm)	96" (2438mm)
88-2'	4-7/16" (112mm)	13" (330mm)	24" (610mm)

LIGHT OUTPUT - LED 88							
Neutral White	SS	882			884		
		Lumens	Watts	LPW	Lumens	Watts	LPW
	HO	-	-	-	4380	43	102



## ORDERING INFORMATION

TYPICAL ORDER EXAMPLE: **884 LED SS CW UE EM**

Prefix	Light Source	Drive Current	Color Temperature	Voltage	Options
882 - 2-foot	LED	SS -Super Saver HO - High Output	CW - Cool White NW - Neutral White WW - Warm White	UE - Universal Electronic (120-277V)  347 - 347V	DIM - 0-10V Dimming EM - Emergency Pack BOR } EOR } Row Mounting Available MOR } Consult Factory
884 - 4-foot					
888 - 8-foot					

ACCESSORY ORDERING INFORMATION (Accessories are field installed)	
Description	Order Number
Pendant Mount Kit (3/8" IP Stems)	PMK