

# Strip LED Fixtures (1-lamp models)

- Universal voltage (120-277 VAC)
- 2, 3, and 4 foot models
- 1 and 2-lamp models
- No ballast, includes direct wire LED tubes
- 50,000 hour lifetime



FS410D0

Toggled direct-wire LED fixtures are an ideal complement or full replacement for existing fluorescent T8/T12 fixtures. Every fixture uses direct-wire technology so there's no additional wiring set-up required. Offering a wide assortment of tube color temperature options (3000K to 6500K) as well as easy tube replacement at an LEDs lifespan ending, Toggled fixtures are designed to last well into the future.

Toggled direct-wire LED fixtures do not use fluorescent ballasts. This allows for both energy savings as a result of no longer having to constantly power ballast(s) as well as cost savings from not requiring future ballast replacements as well as their associated maintenance costs.

Toggled fixtures are compatible with the entire Toggled LED tube product line.

### Outstanding Product Performance

- Provides up to 70% energy savings
- Eliminates ballasts and maintenance costs
- Designed for direct connection to building AC power, voltage 120-277 VAC
- Operating temperature -20 to 45° C

### Superior Quality of Light

- Consistent color rendering, 80 CRI minimum
- UL listed

### Commercial-grade

- Reliable start during cold temperatures
- All metal construction
- Durable white powder-coated finish

## Ordering Information

Fixture	Type	Length	# Lamps	Style	Lens	Wire Termination	Tube Model #
<input type="text"/>	<input type="text"/>	<input type="text"/>	<input type="text"/>	<input type="text"/>	<input type="text"/>	<input type="text"/>	<input type="text"/>
F = Fixture	S = Strip/ Surface	2 = 2 feet 3 = 3 feet 4 = 4 feet	1 = 1 lamp 2 = 2 lamps	0 = Standard	D = None	0 = None	See next page

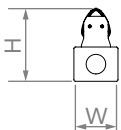


# Strip LED Fixtures (1-lamp models)

## Specifications

	Model No.	Length	Input Voltage	Total Power (Watts)	Total Lumens	Efficacy	CRI	CCT	PF
4 feet	FS410D0-E416-30310	4 feet	120-277 VAC	16	2,100	131	≥80	3000K	>0.9
	FS410D0-E416-40310	4 feet	120-277 VAC	16	2,100	131	≥80	4000K	>0.9
	FS410D0-E416-50310	4 feet	120-277 VAC	16	2,100	131	≥80	5000K	>0.9
	FS410D0-E416-65310	4 feet	120-277 VAC	16	2,100	131	≥80	6500K	>0.9
	FS410D0-A423-40230	4 feet	120-277 VAC	23	3,100	135	≥80	4000K	>0.9
	FS410D0-A423-50230	4 feet	120-277 VAC	23	3,100	135	≥80	5000K	>0.9
3 feet	FS310D0-E312-30310	3 feet	120-277 VAC	12	1,680	140	≥80	3000K	>0.9
	FS310D0-E312-40310	3 feet	120-277 VAC	12	1,680	140	≥80	4000K	>0.9
	FS310D0-E312-50310	3 feet	120-277 VAC	12	1,680	140	≥80	5000K	>0.9
	FS310D0-E312-65310	3 feet	120-277 VAC	12	1,680	140	≥80	6500K	>0.9
2 feet	FS210D0-E208-30310	2 feet	120-277 VAC	8	1,120	140	≥80	3000K	>0.9
	FS210D0-E208-40310	2 feet	120-277 VAC	8	1,120	140	≥80	4000K	>0.9
	FS210D0-E208-50310	2 feet	120-277 VAC	8	1,120	140	≥80	5000K	>0.9
	FS210D0-E208-65310	2 feet	120-277 VAC	8	1,120	140	≥80	6500K	>0.9

## Dimensions



Fixture Model No.	Length	Width	Height
FS410D0	48.5in (1231mm)	1.7in (42mm)	2.9in (74mm)
FS310D0	36.5in (928mm)	1.7in (42mm)	2.9in (74mm)
FS210D0	24.4in (621mm)	1.7in (42mm)	2.9in (74mm)

**Disclaimer:** Toggled reserves the right to make changes to specific items and/or to discontinue any product at any time without notice or obligation and will not be liable for any consequences resulting from the use of this publication.