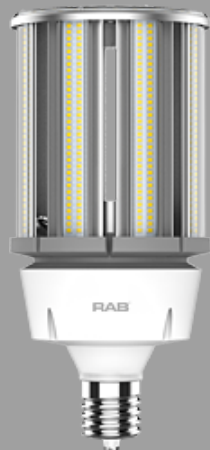


Project:

Type:

Prepared By:

Date:



UPC: 019813833033



Features and Benefits

HID REPLACEMENT - Replace conventional HID lamps

BALLAST BYPASS - Internal driver eliminates the need for external driver or ballast

COMPACT DESIGN - Allows the lamp to fit in most fixtures

HEAT DISSIPATION - Thermal technology extends lifespan

WATER AND DUST RESISTANT - Ideal for rugged applications. IP65 Rated.

ENCLOSED FIXTURE RATED - May be used in enclosed and open fixtures

INSTANT ON - No warmup time required, full brightness instantly

SURGE PROTECTION - Includes 4kV surge protection

Technical Specifications

Technical Specifications

Product Type:

HID

Bulb Shape:

Post Top

Wattage:

120W

Wattage Equivalency:

600W HID

Typical Lumen Output:

18000

Efficacy:

150 lm/W

Color Temperature:

4000K Cool White

CRI:

80

Base Type:

EX39

L70 Lifespan:

50,000 hours

Operating Temperature:

-30°C - 60°C

Dimmable:

No

Beam Angle:

360°

Warranty:

5-Year, No-Compromise Warranty

Installation Type:

Type B, Ballast Bypass

Installation Orientation:

For Vertical Installation Only

For Use in Emergency Fixtures:

No

Technical Specifications (continued)

Technical Specifications

For Use Outdoors in Open Fixtures:

No

Electrical Characteristics

Input Voltage:

100-277V

Power Factor:

>0.9

Operating Frequency:

50 / 60 Hz

Input Current @ 120V:

1mA

Flicker:

<30%

THDi:

<20%

Listings

UL Listed:

Yes

UL Classified:

Yes

DLC Listed:

This product is on the Design Lights Consortium (DLC) Qualified Products List and is eligible for rebates from DLC Member Utilities.

DLC Model Number:

H10017

DLC Product Code:

PLSTU1M72Z3Z

CEC Status:

Lawful for sale in California

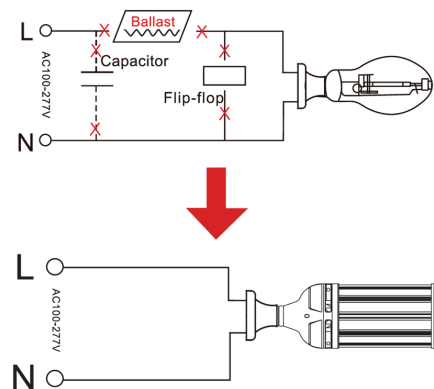
Other

:

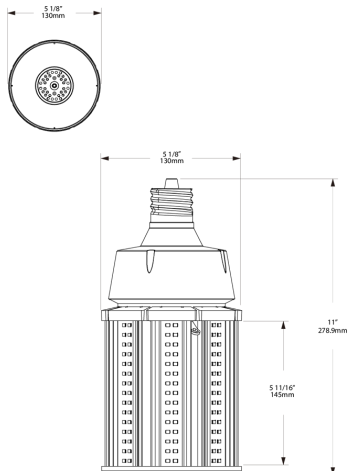
Case and Pallet Dimensions

| | QTY | LENGTH (in) | WIDTH (in) | HEIGHT (in) |
|--------|-----|-------------|------------|-------------|
| CASE | 6 | 17.3 | 13.6 | 11.8 |
| PALLET | 108 | 40.2 | 35.4 | 39.4 |

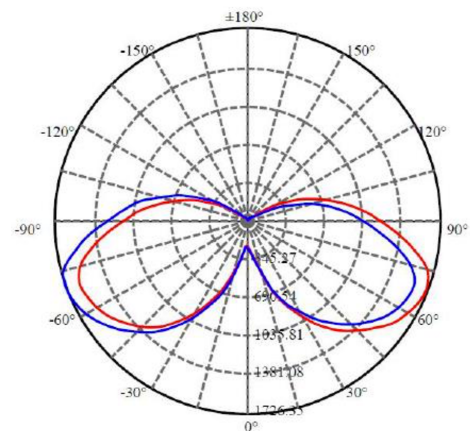
Wiring Diagram



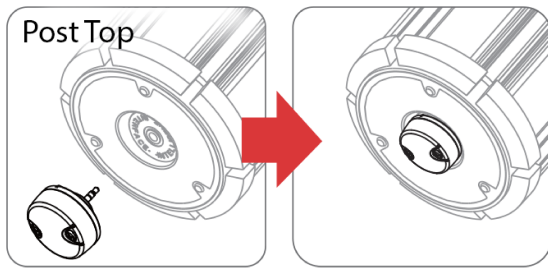
Dimension



Light Distribution



Sensor Installation



Compatible with:

HID-80-EX39-8xx-BYP-PT-G2
HID-100-EX39-8xx-BYP-PT-G2
HID-120-EX39-8xx-BYP-PT