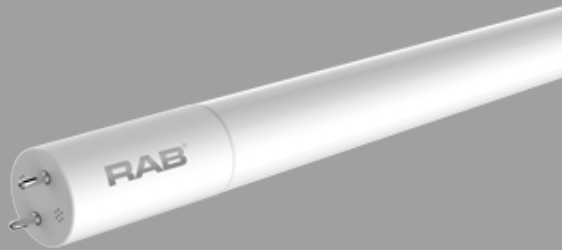


T8-17-48G-850-DE-BYP

RAB | Lamps



Replace T8 or T12 fluorescent tubes. Double-ended line voltage wiring. Works with shunted and non-shunted sockets - no need to change sockets.

Color: White

Weight: 0.6 lbs

Project:

Type:

Prepared By:

Date:

Driver Info

Watts 17.00W
Color Temp 5000K (Daylight)
Lumens 2,200
Efficacy 129.4 LPW
Color Accuracy 82 CRI
L70 Accuracy 50,000

LED Info

Input Voltage 120-277
Power Factor 0.9
Flicker N/A
THDi N/A
R9

Technical Specifications

Technical Specifications

Product Type:

Linear

Bulb Shape:

T8

Nominal Length:

4FT

Finish:

Frosted

Wattage:

17W

Wattage Equivalency:

32W Fluorescent

Typical Lumen Output:

2200

Efficacy:

150 lm/W

Color Temperature:

5000K Daylight

CRI:

82

Base Type:

G13

L70 Lifespan:

50,000 hours

Operating Temperature:

-20°C - 45°C

Dimmable:

No

Beam Angle:

240°

Warranty:

5-Year, No-Compromise Warranty

Installation Type:

Type B, Double Ended wiring

For Use in Emergency Fixtures:

No

For Use Outdoors in Open Fixtures:

No

Technical Specifications (continued)

Electrical Characteristics

Input Voltage:

120-277V

Power Factor:

0.9

Operating Frequency:

50 / 60 Hz

THDi:

<20%

Listings

UL Recognized:

Yes

UL Classified:

Yes

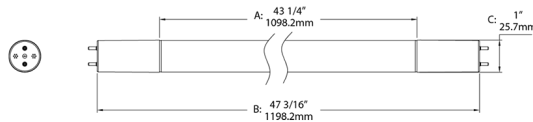
DLC Product Code:

PG7EHIWS

CEC Status:

Lawful for sale in California

Dimensions



Features

FLUORESCENT REPLACEMENT - Replace conventional fluorescent T8 and T12 linear tubes

EASY TO INSTALL - Simply cut the ballast out, and rewire sockets directly to line voltage

SAVE ENERGY AND MONEY - Provides same output as fluorescent but uses far less energy

SAVE ENERGY AND MONEY - Provides same output as fluorescent but uses far less energy

ENCLOSED FIXTURE RATED - May be used in enclosed and open fixtures

DIFFUSION COATING - Will maintain the same light quality over time and won't yellow, shrink, or wrinkle

BALLAST BYPASS - Internal driver eliminates the need for external ballasts or drivers

INSTANT ON - No warmup time required, full brightness instantly

LOW FLICKER - Less than 5% flicker

MERCURY FREE - Environmentally friendly vs fluorescent technologies

SHUNTED AND NON-SHUNTED - Works on shunted and non-shunted sockets