

<b>Project:</b>	<b>Type:</b>
<b>Prepared By:</b>	<b>Date:</b>

## Technical Specifications

### Other

#### Description:

Use for DLED 4" Retrofit downlight installations when the diameter of the cutout hole is larger than the baffle of the fixture

#### Buy American Act Compliance:

RAB values USA manufacturing! Upon request, RAB may be able to manufacture this product to be compliant with the Buy American Act (BAA). Please contact customer service to request a quote for the product to be made BAA compliant.

### Construction

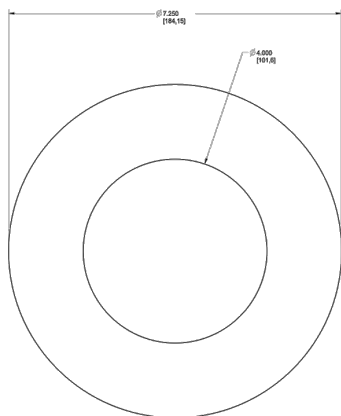
#### Material:

Steel

#### Finish:

Formulated for high durability and long-lasting color

## Dimensions



## Features

Covers gaps when the diameter of cutout hole is larger than fixture baffle