

# FL2103 FL2105 FL2106



## Vanity

### Features

#### Housing

Die-formed Cold-rolled Steel  
 Finish Option: -62 Satin Nickel -30 Oil Rubbed Bronze

#### Optical

Shade: High Transmission Acrylic Create Excellent Light Distribution and Uniformity  
 LED: High Efficiency, High CRI, Binned and Mixed to Reach Uniform Light.

#### Electrical

High Power Factor, Low THD

#### Lamp

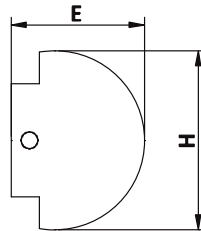
LED Type: Built-in (Color Temperature Option – 3000K, 3500K, 4000K, 5000K)  
 LED MCT Type: Multiple Color Temperature – 3000K, 3500K, 4000K  
 Fluorescent Type: T8 Lamp

#### Certification

UL/cUL, ETL/cETL Listed, Suitable for Damp Locations  
 Energy Star

#### Warranty

5 Years Warranty on Driver and LED Module



### LED Type

| Model         | Input Voltage | Input Wattage | LED CT / CRI | Lumen (TYP) | Finish       | Dimension (L X H X E) | Energy Star |
|---------------|---------------|---------------|--------------|-------------|--------------|-----------------------|-------------|
| FL2103D-xxxxK | 120V ~ 277V   | 23W           | 3000K / >80  | 2200        | Satin Nickel | 24.5" x 5.7" x 4.5"   | Yes         |
| FL2105D-xxxxK | 120V ~ 277V   | 36W           | 3000K / >80  | 3260        | Satin Nickel | 36.5" x 5.7" x 4.5"   | Yes         |
| FL2106D-xxxxK | 120V ~ 277V   | 46W           | 3000K / >80  | 4600        | Satin Nickel | 48.5" x 5.7" x 4.5"   | Yes         |
| FL2103D-MCT   | 120V ~ 277V   | 23W           | 3000K / >80  | 2200        | Satin Nickel | 24.5" x 5.7" x 4.5"   | Yes         |
| FL2105D-MCT   | 120V ~ 277V   | 36W           | 3000K / >80  | 3400        | Satin Nickel | 36.5" x 5.7" x 4.5"   | Yes         |
| FL2106D-MCT   | 120V ~ 277V   | 48W           | 3000K / >80  | 4600        | Satin Nickel | 48.5" x 5.7" x 4.5"   | Yes         |

### CFL Type

| Model          | Input Voltage | Input Wattage | Finish /Shade          | Lamp           | Dimension (L X W X H) |
|----------------|---------------|---------------|------------------------|----------------|-----------------------|
| FL2103-217 HPF | 120V ~ 277V   | 34W           | Satin Nickel / Acrylic | 2 x F17T8, 17W | 24.5" x 5.7" x 4.5"   |
| FL2105-225 HPF | 120V ~ 277V   | 50W           | Satin Nickel / Acrylic | 2 x F25T8, 25W | 36.5" x 5.7" x 4.5"   |
| FL2106-232 HPF | 120V ~ 277V   | 56W           | Satin Nickel / Acrylic | 2 x F32T8, 32W | 48.5" x 5.7" x 4.5"   |